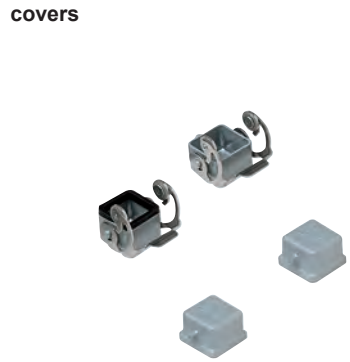


# CKA - MKA and CKAX - MKAX standard metallic version

inserts		page:
CK	3 poles + ⊕	58
CK	4 poles + ⊕	58
CKS	3 poles + ⊕	-
CKS	4 poles + ⊕	-
CKSH	3 poles + ⊕	63
CKSH	4 poles + ⊕	63
CD	8 poles	67
CQ4	2 poles + ⊕	182
CQ4 H	2 poles + ⊕	183
CQ4	3 poles + ⊕	184
CQ	5 poles + ⊕	186
CQ	7 poles + ⊕	187
CQ	12 poles + ⊕	189
CQ	21 poles + ⊕	190



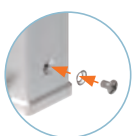
description	part No. (entry Pg 11)	part No. (entry M20)	part No. (with eyelet)	part No. (with loop)
with pegs, top entry	<b>CKA 03 VS</b>	<b>MKA V20</b>		
angled hoods, with pegs, side entry	<b>CKA 03 VAS</b>	<b>MKA VA20</b>		
with galvanized steel lever, top entry	<b>CKA 03 VGS</b>	<b>MKA VG20</b>		
with stainless steel lever, top entry	<b>CKAX 03 VGS</b>	<b>MKAX VG20</b>		
with pegs and gasket, for female inserts <sup>1)</sup>			<b>CKA 03 C</b>	<b>CKA 03 CS</b>
with pegs, for male inserts <sup>1)</sup>			<b>CKA 03 CA</b>	<b>CKA 03 CAS</b>
with stainless steel lever and gasket, for female inserts				<b>CKAX 03 CX</b>
with stainless steel lever, for male inserts				<b>CKAX 03 CXA</b>
gasket and screw kit for IP66/IP67/IP69 <sup>2)</sup>	<b>CKR 65</b>		<b>CKR 65</b>	
gasket and screw kit for IP66/IP67/IP69 <sup>2)</sup> specific for CD 08 inserts	<b>CKR 65 D</b>		<b>CKR 65 D</b>	

<sup>1)</sup> Preferably be used with enclosures CKAX (stainless steel lever).

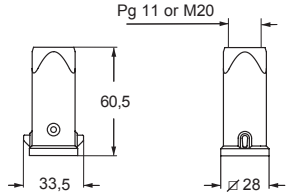
<sup>2)</sup> To obtain the IP66/IP67/IP69 degree of protection, a kit with insert fixing screw and gasket can be purchased separately. Several inserts size "21.21" are already supplied with fixing screw and gasket, which ensures IP66/IP67/IP69 degree of protection. See list below, not including any special version:

- CQF/M 07, CQF/M 12
- CJ KF/M
- CJK 8FT /8IFT /8MT /8IMT, CJK 8M
- CUK 2FT /3FT
- CX 1/2 BDF/M
- CLK 04 SCF /SCF-H /SCM
- CXL 2/4 PF /PM /PFH /PMH /SF /SM, CXL SF/M

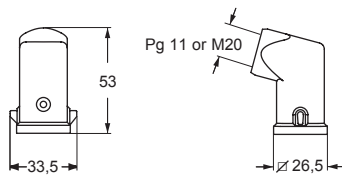
NOTE: Housing type and colour may vary upon specific part No.



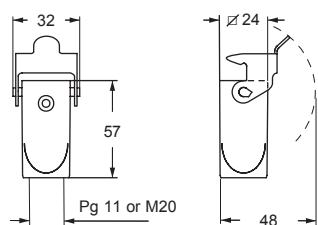
### CKA VS and MKA V



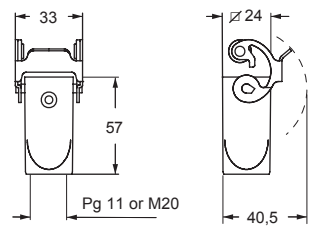
### CKA VAS and MKA VA



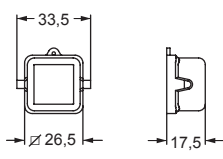
### CKA VGS and MKA VG



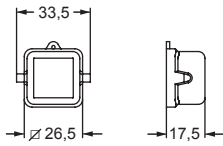
### CKAX VGS and MKAX VG



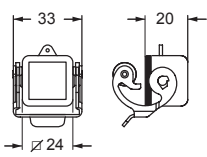
### CKA C - CKA CS



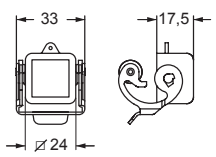
### CKA CA - CKA CAS



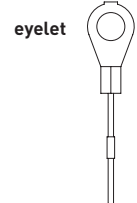
### CKAX CX



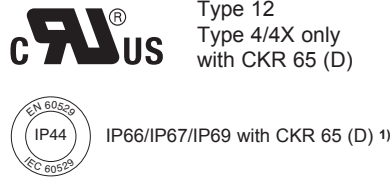
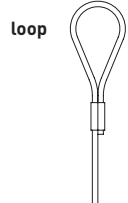
### CKAX CXA



For fixing on housings



For fixing on hoods



CKA - MKA CKAX - MKAX