

CKA - MKA standard metallic version

inserts		page:
CK	3 poles + ⊕	58
CK	4 poles + ⊕	58
CKS	3 poles + ⊕	-
CKS	4 poles + ⊕	-
CKSH	3 poles + ⊕	63
CKSH	4 poles + ⊕	63
CD	8 poles	67
CQ4	2 poles + ⊕	182
CQ4 H	2 poles + ⊕	183
CQ4	3 poles + ⊕	184
CQ	5 poles + ⊕	186
CQ	7 poles + ⊕	187
CQ	12 poles + ⊕	189
CQ	21 poles + ⊕	190

only for I (straight) housings (if the counterpart has glued gasket):

CJ KF/M	223
CJK 8FT/8MT	226
CJK 8IFT/8IMT	226, 228
CJK 8M	233
CUK 2FT	236
CUK 3FT	236
CLK 04 SC	239
CX 1/2 BD	243

bulkhead mounting housings



angled bulkhead mounting housings

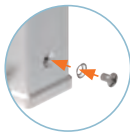


description	part No.	part No. (entry Pg 11)	part No. (entry M20)
with galvanized steel lever	CKA 03 I		
with stainless steel lever	CKAX 03 I		
without cable entry, galvanized steel lever		CKA 03 IA	
without cable entry, stainless steel lever		CKAX 03 IA	
with cable entry, galvanized steel lever		CKA 03 IAPS	MKA IAP20
with cable entry, stainless steel lever		CKAX 03 IAPS	MKAX IAP20
with cable entry, galvanized steel lever, bulkhead hole closed		CKA 03 APS	MKA AP20
with cable entry, stainless steel lever, bulkhead hole closed		CKAX 03 APS	MKAX AP20
gasket and screw kit for IP66/IP67/IP69 1)	CKR 65	CKR 65	
gasket and screw kit for IP66/IP67/IP69 1) specific for CD 08 inserts	CKR 65 D	CKR 65 D	

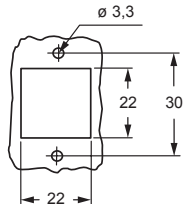
1) To obtain the IP66/IP67/IP69 degree of protection, a kit with insert fixing screw and gasket can be purchased separately.
Several inserts size "21.21" are already supplied with fixing screw and gasket, which ensures IP66/IP67/IP69 degree of protection. See list below, not including any special version:

- CQF/M 07, CQF/M 12
- CJ KF/M
- CJK 8FT /8IFT /8MT /8IMT, CJK 8M
- CUK 2FT /3FT
- CX 1/2 BDF/M
- CLK 04 SCF /SCF-H /SCM
- CXL 2/4 PF /PM /PFH /PMH /SF /SM, CXL SF/M

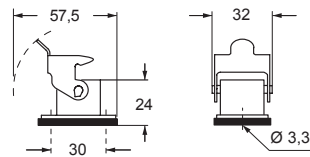
NOTE: Housing type and colour may vary upon specific part No.



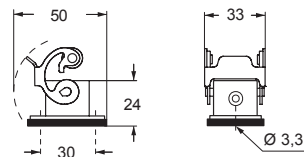
panel cut-out for enclosures



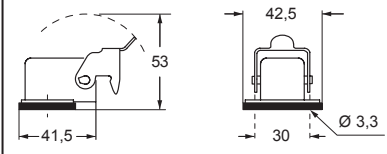
CKA I



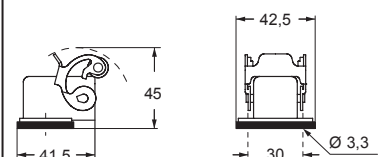
CKAX I



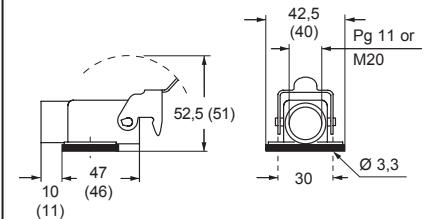
CKA IA



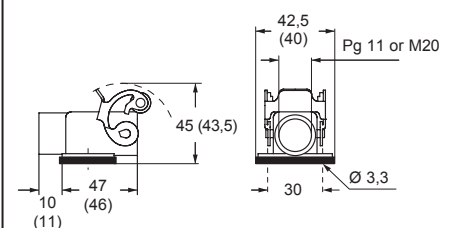
CKAX IA



CKA IAPS (CKA APS) and MKA IAP (MKA AP)



CKAX IAPS (CKAX APS) and MKAX IAP (MKAX AP)



CEC® Type 12
Type 4/4X only
with CKR 65 (D)



IP66/IP67/IP69 with CKR 65 (D) 1)