

# CK - MK standard insulating version

inserts		page:
CK	3 poles + ⊕	58
CK	4 poles + ⊕	58
CKS	3 poles + ⊕	-
CKS	4 poles + ⊕	-
CKSH	3 poles + ⊕	63
CKSH	4 poles + ⊕	63
CD	7 poles + ⊕	66
CD	8 poles	67
CQ4	2 poles + ⊕	182
CQ4 H	2 poles + ⊕	183
CQ4	3 poles + ⊕	184
CQ	5 poles + ⊕	186
CQ	7 poles + ⊕	187
CQ	12 poles + ⊕	189
CQ	21 poles + ⊕	190

only for I (straight) housings (if the counterpart has glued gasket):

CJ KF/M	223
CJK 8FT/8MT	226
CJK 8IFT/8IMT	226, 228
CJK 8M	233
CUK 2FT	236
CUK 3FT	236
CLK 04 SC	239
CX 1/2 BD	243

## bulkhead mounting housings



## angled bulkhead mounting housings

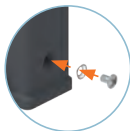


description	part No.	part No. (entry Pg 11)	part No. (entry M20)
with lever	<b>CK 03 I</b> (light grey RAL 7035)		
with lever	<b>CK 03 IN</b> (jet black RAL 9005)		
without cable entry, with lever		<b>CK 03 IA</b> (light grey RAL 7035)	
without cable entry, with lever		<b>CK 03 IAN</b> (jet black RAL 9005)	
with cable entry and lever		<b>CK 03 IAPS</b> (light grey RAL 7035)	<b>MK IAP20</b> (light grey RAL 7035)
with cable entry and lever		<b>CK 03 IAPNS</b> (jet black RAL 9005)	<b>MK IAPN20</b> (jet black RAL 9005)
gasket and screw kit for IP66/IP67/IP69 1)	<b>CKR 65</b>	<b>CKR 65</b>	
gasket and screw kit for IP66/IP67/IP69 1) specific for CD 07/08 inserts	<b>CKR 65 D</b>	<b>CKR 65 D</b>	

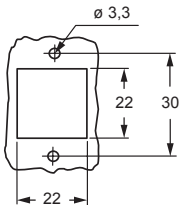
1) To obtain the IP66/IP67/IP69 degree of protection, a kit with insert fixing screw and gasket can be purchased separately.  
Several inserts size "21.21" are already supplied with fixing screw and gasket, which ensures IP66/IP67/IP69 degree of protection. See list below, not including any special version:

- CQF/M 07, CQF/M 12
- CJ KF/M
- CJK 8FT /8IFT /8MT /8IMT, CJK 8M
- CUK 2FT /3FT
- CX 1/2 BDF/M
- CLK 04 SCF /SCF-H /SCM
- CXL 2/4 PF /PM /PFH /PMH /SF /SM, CXL SF/M

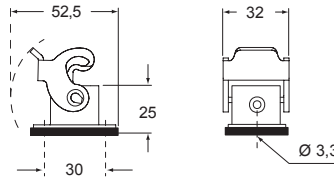
NOTE: Housing type and colour may vary upon specific part No.



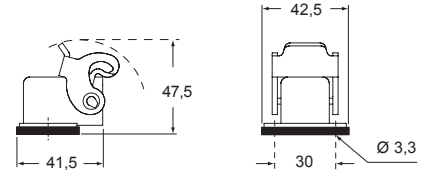
panel cut-out for enclosures



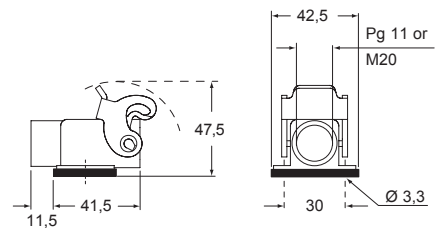
### CK I - CK IN



### CK IA - CK IAN



### CK IAPS - CK IAPNS and MK IAP - MK IAPN



**CEC**®  
Type 12  
Type 4/4X only  
with CKR 65 (D)



IP66/IP67/IP69 with CKR 65 (D) 1)