

CK - MK standard insulating version

inserts		page:
CK	3 poles + ⊕	58
CK	4 poles + ⊕	58
CKS	3 poles + ⊕	-
CKS	4 poles + ⊕	-
CKSH	3 poles + ⊕	63
CKSH	4 poles + ⊕	63
CD	7 poles + ⊕	66
CD	8 poles	67
CQ4	2 poles + ⊕	182
CQ4 H	2 poles + ⊕	183
CQ4	3 poles + ⊕	184
CQ	5 poles + ⊕	186
CQ	7 poles + ⊕	187
CQ	12 poles + ⊕	189
CQ	21 poles + ⊕	190

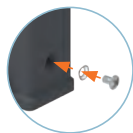


description	part No. (entry Pg 11)	part No. (entry M20)	part No. (with eyelet)	part No. (with loop)
with pegs, top entry	CK 03 VS (light grey RAL 7035)	MK V20 (light grey RAL 7035)		
with pegs, top entry	CK 03 VNS (jet black RAL 9005)	MK VN20 (jet black RAL 9005)		
with pegs, side entry	CK 03 VAS (light grey RAL 7035)	MK VA20 (light grey RAL 7035)		
with pegs, side entry	CK 03 VANS (jet black RAL 9005)	MK VAN20 (jet black RAL 9005)		
with lever, top entry	CK 03 VGS (light grey RAL 7035)	MK VG20 (light grey RAL 7035)		
with lever, top entry	CK 03 VGNS (jet black RAL 9005)	MK VGN20 (jet black RAL 9005)		
with pegs and gasket, for female inserts			CK 03 C (light grey RAL 7035)	CK 03 CS (light grey RAL 7035)
with pegs and gasket, for female inserts			CK 03 CN (jet black RAL 9005)	CK 03 CNS (jet black RAL 9005)
with pegs, for male inserts			CK 03 CA (light grey RAL 7035)	CK 03 CAS (light grey RAL 7035)
with pegs, for male inserts			CK 03 CAN (jet black RAL 9005)	CK 03 CANS (jet black RAL 9005)
with lever and gasket, for female inserts				CK 03 CX (light grey RAL 7035)
with lever and gasket, for female inserts				CK 03 CXN (jet black RAL 9005)
with lever, for male inserts				CK 03 CXA (light grey RAL 7035)
with lever, for male inserts				CK 03 CXAN (jet black RAL 9005)
gasket and screw kit for IP66/IP67/IP69 1)	CKR 65			
gasket and screw kit for IP66/IP67/IP69 1) specific for CD 07/08 inserts	CKR 65 D			

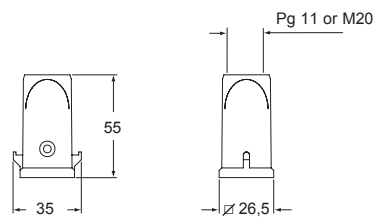
1) To obtain the IP66/IP67/IP69 degree of protection, a kit with insert fixing screw and gasket can be purchased separately.
Several inserts size "21.21" are already supplied with fixing screw and gasket, which ensures IP66/IP67/IP69 degree of protection. See list below, not including any special version:

- CQF/M 07, CQF/M 12
- CJ KF/M
- CJK 8FT /8IFT /8MT /8IMT, CJK 8M
- CUK 2FT /3FT
- CX 1/2 BDF/M
- CLK 04 SCF /SCF-H /SCM
- CXL 2/4 PF /PM /PFH /PMH /SF /SM, CXL SF/M

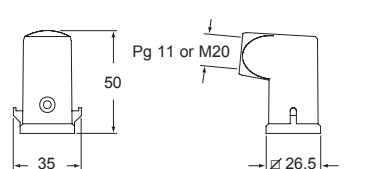
NOTE: Housing type and colour may vary upon specific part No.



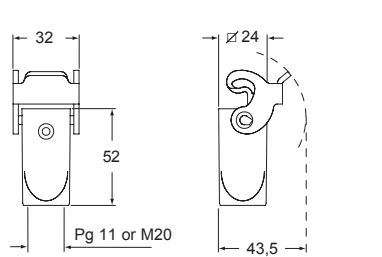
CK VS - CK VNS and MK V - MK VN



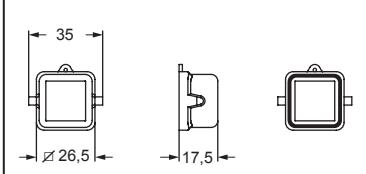
CK VAS - CK VANS and MK VA - MK VAN



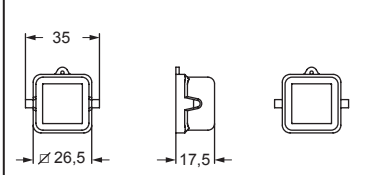
CK VGS - CK VGNS and MK VG - MK VGN



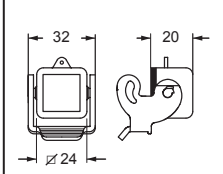
CK C - CK CN - CK CS



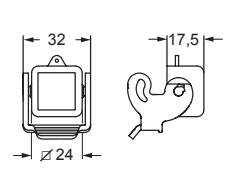
CK CA - CK CAN - CK CAS



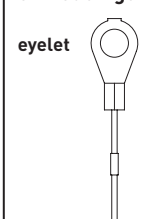
CK CX - CK CXN



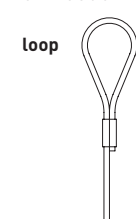
CK CXA - CK CXAN



For fixing on housings



For fixing on hoods



Type 12
Type 4/4X only
with CKR 65 (D)



IP66/IP67/IP69 with CKR 65 (D) 1)