

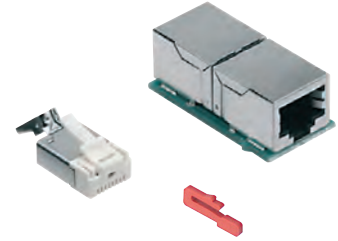
CJ RJ45 connector

enclosures:	page:
size "21.21"	
insulating type (CK IN, CKG/MKG VN/VAN)	346 - 348
metallic type (CKAX I, CKAG/MKAG V/VA)	353 - 355
IP68 (CKG I, CKG/MKG V)	628 - 631

adaptor for RJ45 connectors



RJ45 connectors



description	part No.	part No. data contacts only	part No. data contacts/+2 power contacts
without RJ45 connector (to be ordered separately) adapter for RJ45 female connector in fixed enclosures	CJ KF		
RJ45 coupler jack with 8 data contacts ¹⁾ RJ45 coupler jack with 8 data contacts/2 power contacts ¹⁾		CX 8 JF	CX 8/2 JF
without RJ45 connector (to be ordered separately) adapter for RJ45 male connector ²⁾	CJ KM		
RJ45 plug with 4 data contacts RJ45 plug with 4 data contacts/2 power contacts RJ45 plug with 6 data contacts/2 power contacts RJ45 plug with 8 data contacts RJ45 plug, 4 data contacts cat. 5e ProfiNET®		CX 4 JM CX 8 JM CX 4E JM	CX 4/2 JM CX 6/2 JM

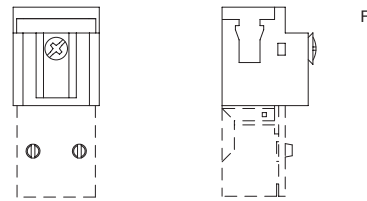
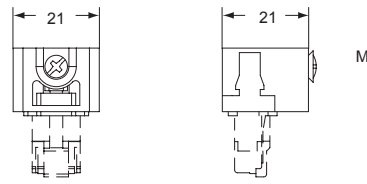
¹⁾ 4-pole version on request, part No. **CX 4 JF** and **CX 4/2 JF** with "crossover" link

²⁾ to be used with hoods

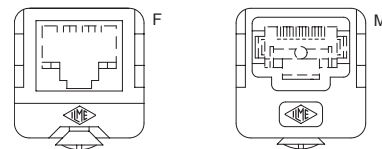
RJ45 connector features:

- RJ45 insert, Class 5 Ethernet
- rated current: 2,1A at 70 °C
- rated voltage: 50VDC / 35VAC
- IDC terminals:
- for 0,22 mm² (AWG 24/7) data contacts **CX 4 JM**
- for 0,14 mm² (AWG 26/7) or 0,22 mm² (AWG 24/7) data contacts **CX 4/2 JM**
- for 0,34 mm² (AWG 22/7) or 0,38 mm² (AWG 22/19) power contacts
- for 0,14 mm² (AWG 26/7) data contacts **CX 6/2 JM**
- for 0,25 mm² (AWG 23/19) power contacts
- for 0,14 mm² (AWG 26/7) data contacts **CX 8 JM**
- for 0,34 mm² (AWG 22/7) data contacts **CX 4E JM**
- /7 = 7-strands wire
- /19 = 19-strands wire
- Ø_{max} insulating conductors 1 mm (data), 1,4 mm (power and CX 4E JM)
- Ø_{max} complete cable 7 mm (CX 8 JM: 6,9 mm)
- temperature range: from -40°C to 120 °C
- nickel plated brass screening
- insert coding pin for RJ45 adapters (optional)*: **CR KC**
- * Optional four coding positions CR KC insert coding pin (4 pins required for each connector coupling).
- self-extinguishing properties: to UL 94V-0
- crimp pliers: **CJPZ Y**
- screened cable stripper: **CJST**
- for crimping a male connector, see the crimp tool section page 735
- **US** (UL for USA and Canada) certified

CJ KF, CJ KM

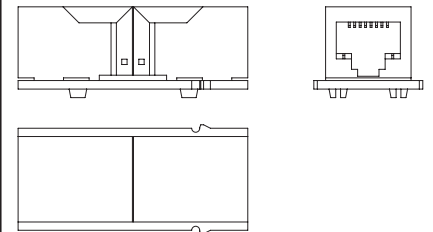


contacts side (front view)

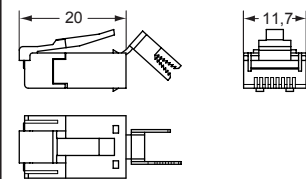


- inserts already supplied with stainless steel fixing screw with gasket, which ensures IP66/IP67/IP69 degree of protection

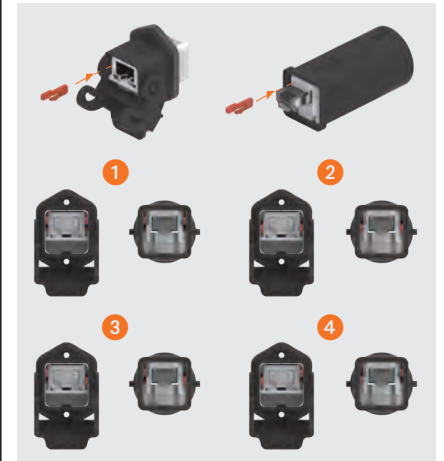
CX 4 JF, CX 4/2 JF, CX 8 JF, CX 8/2 JF



CX 4 JM, CX 4E JM, CX 4/2 JM, CX 6/2 JM, CX 8 JM



How to use CR KC coding pins (cannot be used with IP68 enclosures)



CR KC insert coding pin

