

CH - CA - CF and MH - MA - MF C-TYPE standard version

inserts

CD	50 poles + ⊕
CDD	76 poles + ⊕
CDA	32 poles + ⊕
CSAH	32 poles + ⊕
CDC	32 poles + ⊕

page:

71
80
102
103
106

insert dimensions:
2 x (66 x 16) mm

hoods with 4 pegs



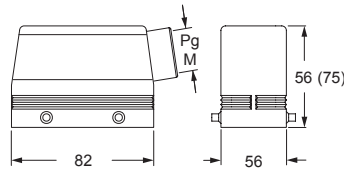
hoods with 2 levers or 4 pegs



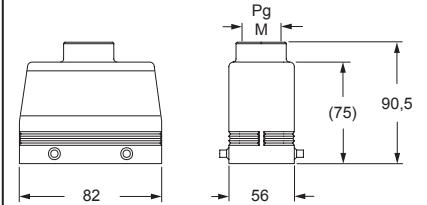
description	part No.	entry Pg	part No.	entry M	part No.	entry Pg	part No.	entry M
with pegs, side entry	CHO 50	21	MHO 50.25	25				
with pegs, side entry			MHO 50.32	32				
with pegs, side entry, high construction	CAO 50.21	21	MAO 50.25	25				
with pegs, side entry, high construction	CAO 50.29	29	MAO 50.32	32				
with pegs, top entry, high construction					CAV 50.21	21	MAV 50.25	25
with pegs, top entry, high construction					CAV 50.29	29	MAV 50.32	32
with levers and gasket, top entry, high construction					CAV 50 G29	29	MAV 50 G32	32
with pegs, side entry, high construction, without adapter 1)	CFO 50.21	21	MFO 50.25	25				
with pegs, side entry, high construction, without adapter 1)	CFO 50.29	29	MFO 50.32	32				
with pegs, top entry, high construction, without adapter 1)					CFV 50.21	21	MFV 50.25	25
with pegs, top entry, high construction, without adapter 1)					CFV 50.29	29	MFV 50.32	32
with levers and gasket, top entry, high, without adapter 1)					CFV 50 G29	29	MFV 50 G32	32

1) enclosure without adapter, threaded on the body, to be used only with a complete cable gland.

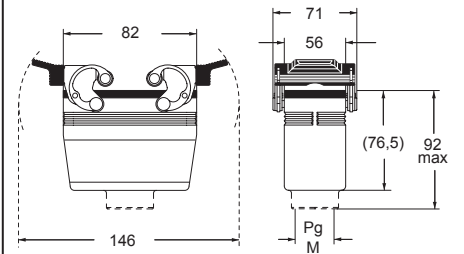
CHO (CAO/CFO) and MHO (MAO/MFO)




CAV (CFV) and MAV (MFV)




CAV G (CFV G) and MAV G (MFV G)



CAIUS® Type 4/4X/12

 insulating cable gland or fittings without gasket

 cable gland with O-Ring gasket

C-TYPE