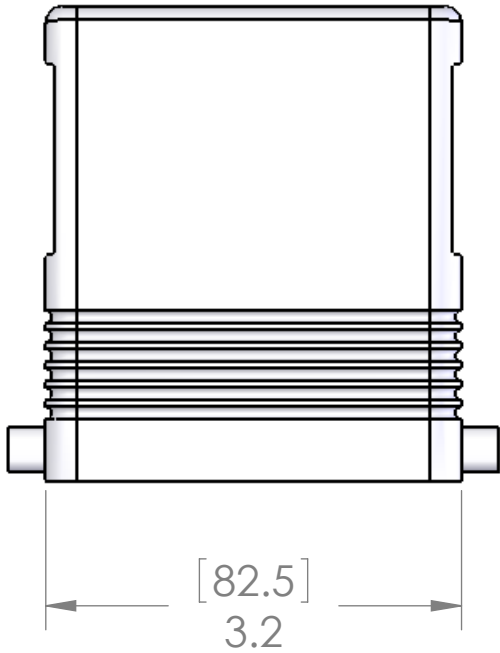
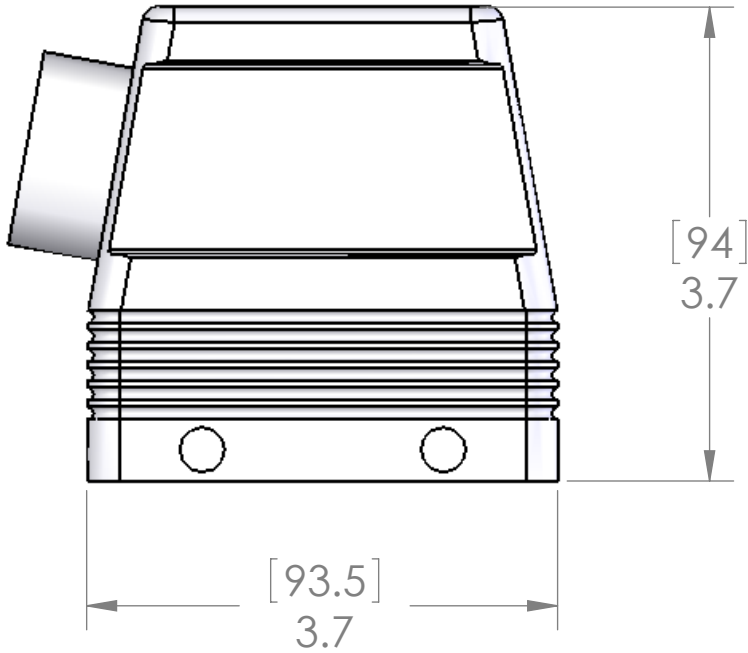
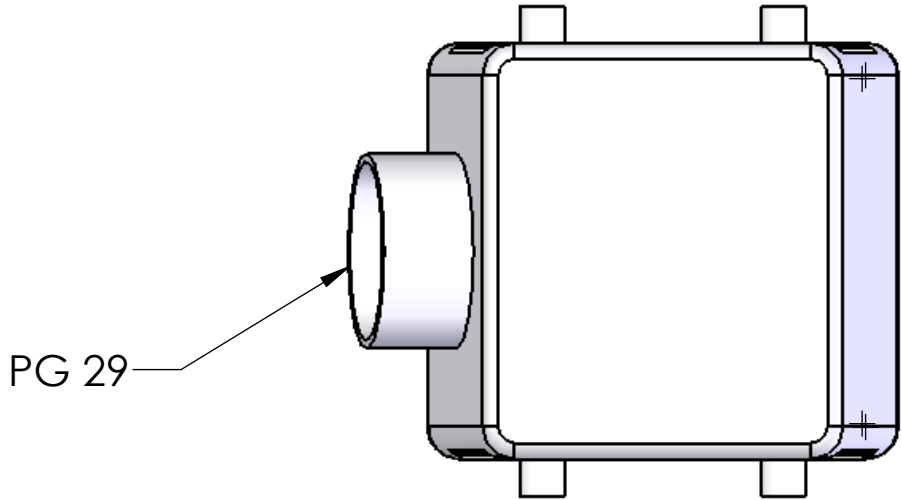


REVISIONS			
REV.	DESCRIPTION	DATE	APPROVED
A	REDRAWN IN SW	2/6/2007	



HOUSING MATERIALS	
BODY:	EPOXY COATED DIE CAST ALUMINUM
ROLLERS:	STAINLESS STEEL
FITTING:	NICKEL PLATED BRASS

UNLESS OTHERWISE SPECIFIED:	
DIMENSIONS ARE IN INCHES AND [MM]	NAME
	DRAWN
	CHECKED
	ENG APPR.
	MFG APPR.
MATERIAL	Q.A.
	COMMENTS:
FINISH	
DO NOT SCALE DRAWING	

MENCOM CORPORATION		
TITLE: 32 POLE HOOD, PG29, WITH PEGS, SIDE ENTRY DOUBLE LEVER		
SIZE	DWG. NO.	REV
B	CHO-32.29	A
SCALE: 2:3	WEIGHT:	SHEET 1 OF 1

PROPRIETARY AND CONFIDENTIAL  
THE INFORMATION CONTAINED IN THIS  
DRAWING IS THE SOLE PROPERTY OF  
MENCOM CORPORATION. ANY  
REPRODUCTION IN PART OR AS A WHOLE  
WITHOUT THE WRITTEN PERMISSION OF  
MENCOM CORPORATION IS  
PROHIBITED.

SEAL RATING OF IP 65 ONLY ACHIEVED WHEN FULLY  
LATCHED TO MATING BASE AND WITH AN  
APPROPRIATE SEALING GLAND INSTALLED