

CH - CA and MA CENTRAL LEVER

inserts

CD	64 poles + ⊕	72
CDD	108 poles + ⊕	81
CDS	42 poles + ⊕	-
CDSH	42 poles + ⊕	89
CNE	24 poles + ⊕	113
CSE	24 poles + ⊕	-
CSH	24 poles + ⊕	113
CSH S	24 poles + ⊕	125
CCE	24 poles + ⊕	133
CMSH	10+2 (aux) poles + ⊕	140
CMCE	10+2 (aux) poles + ⊕	141
CSS	24 poles + ⊕	151
CT, CTS (10A) *)	64 poles + ⊕	157
CT, CTSE (16A) *)	24 poles + ⊕	163
CQE	46 poles + ⊕	171
CQEE	64 poles + ⊕	177
CX	4/8 and 6/6 poles + ⊕	204, 206
MIXO	6 modules	262 - 317

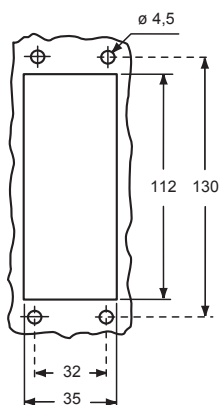
*) can be used only in bulkhead mounting housings

page:

bulkhead mounting housings
for central leversurface mounting housings,
with two entries, for central lever

description	part No.	part No.	entry Pg	part No.	entry M
bulkhead mounting with pegs	CHI 24 YC				
surface mounting, high construction, with pegs		CAP 24 YC229	29x2	MAP 24 YC232	32x2

panel cut-out for bulkhead mounting housings



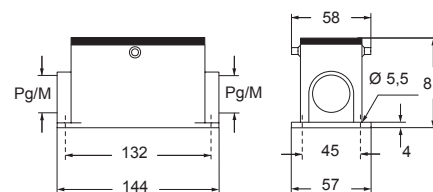
☑ Even when coding is not required, it is recommended to use CRM and CRF pins with CD and CDD inserts and CRM CX and CRF CX pins with MIXO inserts to reduce movements when fitting and removing the connectors and to avoid contact damages.

Within this scope, the DIN 43 652 standard requires a maximum angular longitudinal fluctuation of $\pm 5^\circ$.

CHI YC



CAP YC and MAP YC



CAUS

Type
4/4X/12

