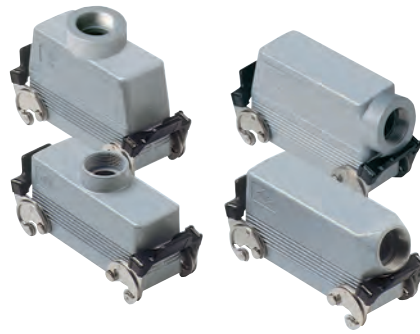


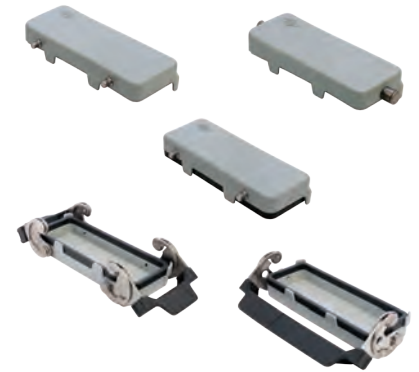
# CH - CA and MH - MA C-TYPE standard version

inserts		page:
CD	64 poles + ⊕	72
CDD	108 poles + ⊕	81
CDS	42 poles + ⊕	-
CDSH	42 poles + ⊕	89
CNE	24 poles + ⊕	113
CSE	24 poles + ⊕	-
CSH	24 poles + ⊕	113
CSH S	24 poles + ⊕	125
CCE	24 poles + ⊕	133
CMSH	10+2 (aux) poles + ⊕	140
CMCE	10+2 (aux) poles + ⊕	141
CSS	24 poles + ⊕	151
CQE	46 poles + ⊕	171
CQEE	64 poles + ⊕	177
CX	4/8 and 6/6 poles + ⊕	204 and 206
MIXO	6 modules	262 - 317

## hoods with 2 levers



## covers



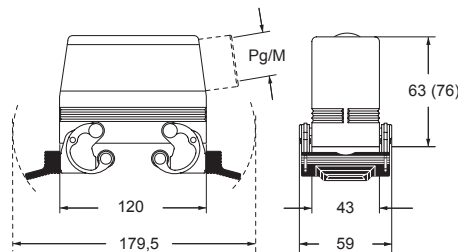
description	part No.	entry Pg	part No	entry M	part No. (with eyelet)	part No. (with loop)
with levers, side entry <sup>1)</sup>	<b>CHO 24 X</b>	21	<b>MHO 24 X25</b>	25		
with levers, side entry <sup>1)</sup>			<b>MHO 24 X32</b>	32		
with levers, side entry, high construction <sup>1)</sup>	<b>CAO 24 X</b>	21	<b>MAO 24 X32</b>	32		
with levers, side entry, high construction <sup>1)</sup>	<b>CAO 24 X29</b>	29	<b>MAO 24 X40</b>	40		
with levers, top entry <sup>1)</sup>	<b>CHV 24 X</b>	21				
with levers, top entry <sup>1) 3)</sup>			<b>MHV 24 X25</b>	25		
with levers, top entry <sup>1)</sup>			<b>MHV 24 X32</b>	32		
with levers, top entry, high construction <sup>1)</sup>	<b>CAV 24 X</b>	21	<b>MAV 24 X32</b>	32		
with levers, top entry, high construction <sup>1)</sup>	<b>CAV 24 X29</b>	29	<b>MAV 24 X40</b>	40		
with 4 pegs (for enclosures with 2 levers with gasket)					<b>CHC 24</b>	<b>CHC 24 S</b>
with 4 pegs and gasket (for enclosures with 2 levers) <sup>2)</sup>						<b>CHC 24 C</b>
with 2 pegs (for enclosures with 1 lever with gasket)					<b>CHC 24 L</b>	<b>CHC 24 SL</b>
with 2 levers (for hoods with 4 pegs)						<b>CHC 24 G</b>
with 1 lever (for hoods with 2 pegs)						<b>CHC 24 LG</b>

<sup>1)</sup> may be combined with enclosures:  
 - CHI/CHP/CAP 16 CS/CP/C  
 - MHP/MAP 24 CS/CP

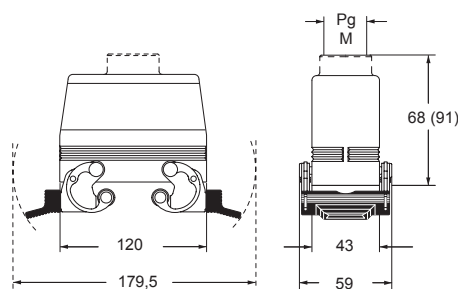
<sup>2)</sup> may be combined with enclosures:  
 - CHO/CAO 24 X and CHV/CAV 24 X  
 - MHO/MAO 24 X and MHV/MAV 24 X

<sup>3)</sup> can only be used with a complete cable gland (to be purchased separately).

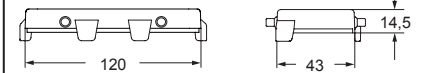
### CHO X (CAO X) and MHO X (MAO X)



### CHV X (CAV X) and MHV X (MAV X)



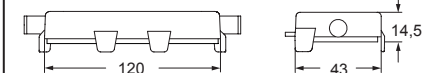
### CHC (S)



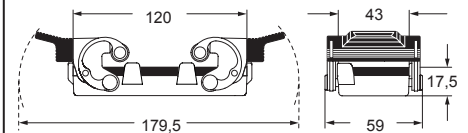
### CHC C



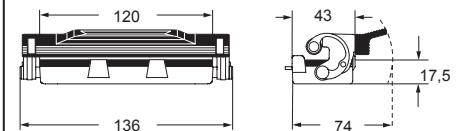
### CHC L (SL)



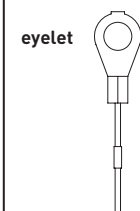
### CHC G



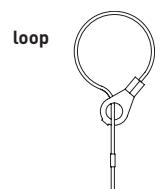
### CHC LG



For fixing on housings



For fixing on hoods



**CAIUS**® Type 4/4X/12



insulating cable gland or fittings without gasket



cable gland with O-Ring gasket

C-TYPE