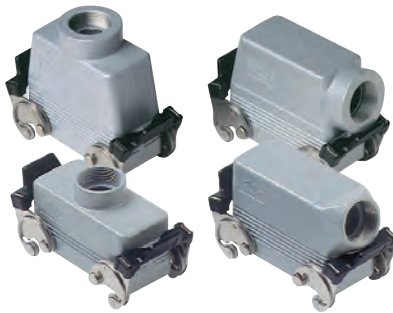


CH - CA and MH - MA C-TYPE standard version

inserts		page:
CD	40 poles + ⊕	70
CDD	72 poles + ⊕	79
CDS	27 poles + ⊕	-
CDSH	27 poles + ⊕	88
CNE	16 poles + ⊕	112
CSE	16 poles + ⊕	-
CSH	16 poles + ⊕	112
CSH S	16 poles + ⊕	124
CCE	16 poles + ⊕	132
CMSH, CMCE	6+2 (aux) poles + ⊕	138 - 139
CSS	16 poles + ⊕	150
CQE	32 poles + ⊕	170
CQEE	40 poles + ⊕	176
CP	6 poles + ⊕	178
CX	6/12, 6/36 and 12/2 poles + ⊕	197 - 199
CX	4/0 and 4/2 poles + ⊕	200 - 201
MIXO	4 modules	262 - 317

hoods with 2 levers



covers



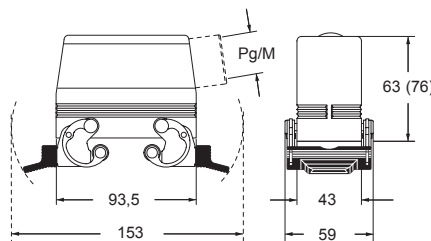
description	part No.	entry Pg	part No	entry M	part No. (with eyelet)	part No. (with loop)
with levers, side entry ¹⁾	CHO 16 X	21	MHO 16 X25	25		
with levers, side entry ¹⁾			MHO 16 X32	32		
with levers, side entry, high construction ¹⁾	CAO 16 X	21	MAO 16 X32	32		
with levers, side entry, high construction ¹⁾	CAO 16 X29	29	MAO 16 X40	40		
with levers, top entry ¹⁾	CHV 16 X	21	MHV 16 X25	25		
with levers, top entry ^{1) 3)}			MHV 16 X32	32		
with levers, top entry ¹⁾			MAV 16 X32	32		
with levers, top entry, high construction ¹⁾	CAV 16 X	21	MAV 16 X40	40		
with levers, top entry, high construction ¹⁾	CAV 16 X29	29				
with 4 pegs (for enclosures with 2 levers with gasket)					CHC 16	CHC 16 S
with 4 pegs and gasket (for enclosures with 2 levers) ²⁾						CHC 16 C
with 2 pegs (for enclosures with 1 lever with gasket)					CHC 16 L	CHC 16 SL
with 2 levers (for hoods with 4 pegs)						CHC 16 G
with 1 lever (for hoods with 2 pegs)						CHC 16 LG

¹⁾ may be combined with enclosures:
 - CHI/CHP/CAP 16 CS/CP/C
 - MHP/MAP 16 CS/CP

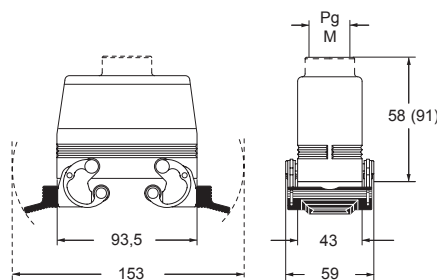
²⁾ may be combined with enclosures:
 - CHO/CAO 16 X and CHV/CAV 16 X
 - MHO/MAO 16 X and MHV/MAV 16 X

³⁾ can only be used with a complete cable gland (to be purchased separately).

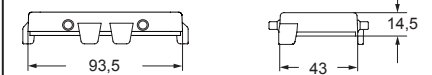
CHO X (CAO X) and MHO X (MAO X)



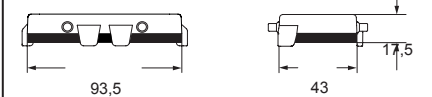
CHV X (CAV X) and MHV X (MAV X)



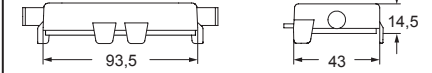
CHC (S)



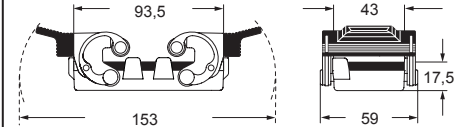
CHC C



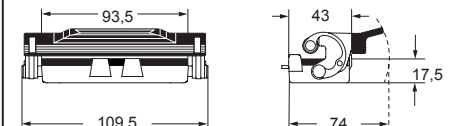
CHC L (SL)



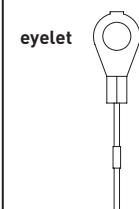
CHC G



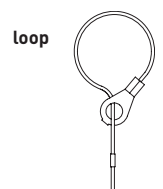
CHC LG



For fixing on housings



For fixing on hoods



CAIUS Type 4/4X/12



insulating cable gland or fittings without gasket



cable gland with O-Ring gasket