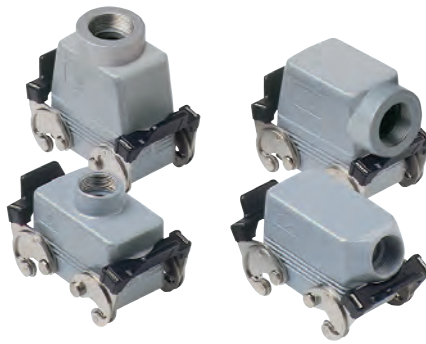


CH - CA and MH - MA C-TYPE standard version

inserts		page:
CDD	42 poles + ⊕	78
CDS	18 poles + ⊕	-
CDSH	18 poles + ⊕	87
CNE	10 poles + ⊕	111
CSE	10 poles + ⊕	-
CSH	10 poles + ⊕	111
CSH S	10 poles + ⊕	123
CCE	10 poles + ⊕	131
CMSH	3+2 (aux) poles + ⊕	136
CMCE	3+2 (aux) poles + ⊕	137
CSS	10 poles + ⊕	149
CQE	18 poles + ⊕	169
CX	8/24 poles + ⊕	194
MIXO	3 modules	262 - 317

hoods with 2 levers



covers



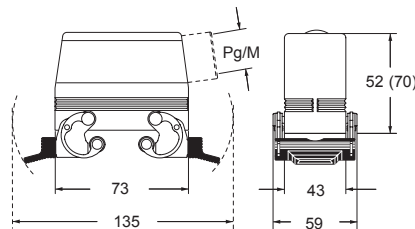
description	part No.	entry Pg	part No	entry M	part No. (with eyelet)	part No. (with loop)
with levers, side entry ¹⁾	CHO 10 X	16	MHO 10 X20	20		
with levers, side entry ¹⁾			MHO 10 X25	25		
with levers, side entry, high construction ¹⁾	CAO 10 X	21	MAO 10 X32	32		
with levers, side entry, high construction ¹⁾	CAO 10 X29	29	MAO 10 X40	40		
with levers, top entry ¹⁾	CHV 10 X	16	MHV 10 X20	20	CHC 10	CHC 10 S
with levers, top entry ³⁾			MHV 10 X25	25		CHC 10 C
with levers, top entry ¹⁾			MAV 10 X32	32	CHC 10 L	CHC 10 SL
with levers, top entry, high construction ¹⁾	CAV 10 X	21	MAV 10 X40	40		CHC 10 G
with levers, top entry, high construction ¹⁾	CAV 10 X29	29				CHC 10 LG
with 4 pegs (for enclosures with 2 levers with gasket)					CHC 10	CHC 10 S
with 4 pegs and gasket (for enclosures with 2 levers) ²⁾					CHC 10 L	CHC 10 C
with 2 pegs (for enclosures with 1 lever with gasket)						CHC 10 SL
with 2 levers (for hoods with 4 pegs)						CHC 10 G
with 1 lever (for hoods with 2 pegs)						CHC 10 LG

¹⁾ may be combined with enclosures:
 - CHI/CHP/CAP 10 CS/CP/C
 - MHP/MAP 10 CS/CP

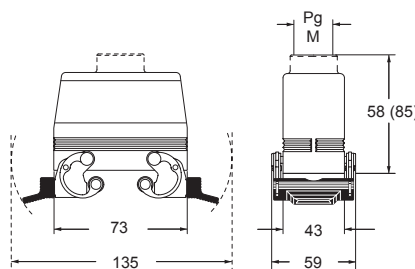
²⁾ may be combined with enclosures:
 - CHO/CAO 10 X and CHV/CAV 10 X
 - MHO/MAO 10 X and MHV/MAV 10 X

³⁾ can only be used with a complete cable gland (to be purchased separately).

CHO X (CAO X) and MHO X (MAO X)



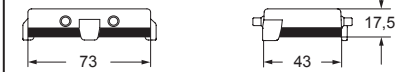
CHV X (CAV X) and MHV X (MAV X)



CHC (S)



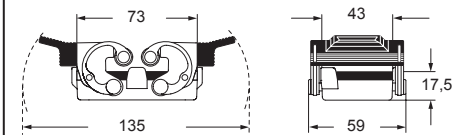
CHC C



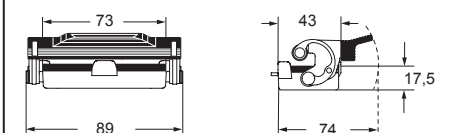
CHC L (SL)



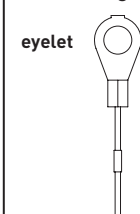
CHC G



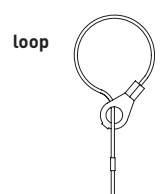
CHC LG




For fixing on housings




For fixing on hoods



CAIUS® Type 4/4X/12

 insulating cable gland or fittings without gasket

 cable gland with O-Ring gasket