

CG and MG high protection IP68 version (screw locking)

inserts		page:
CDD	24 poles + ⊕	76
CDS	9 poles + ⊕	-
CDSH	9 poles + ⊕	86
CDSH NC	6 poles + ⊕	95
CNE	6 poles + ⊕	110
CSE	6 poles + ⊕	-
CSH	6 poles + ⊕	110
CSH S	6 poles + ⊕	122
CCE	6 poles + ⊕	130
CSS	6 poles + ⊕	148
CQE	10 poles + ⊕	168
MIXO	2 modules	262 - 317

hoods

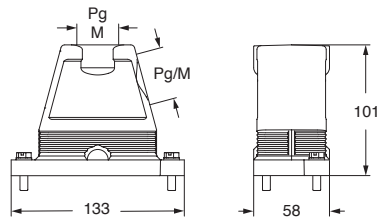


covers

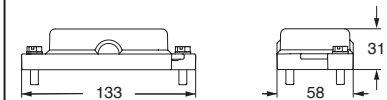


description	part No.	entry Pg	part No	entry M	part No.
with side entry					
size "44.27"	CGO 06.16	16	MGO 06.25	25	
size "44.27"	CGO 06.21	21	MGO 06.32	32	
size "44.27"	CGO 06.29	29			
with top entry					
size "44.27"	CGV 06.16	16	MGV 06.25	25	
size "44.27"	CGV 06.21	21	MGV 06.32	32	
size "44.27"	CGV 06.29	29	MGV 06.40	40	
size "44.27"					CGC 06

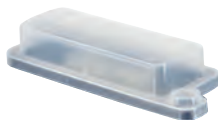
CGO/MGO and CGV/MGV



CGC



CGCP FX
Dust protection cover
(from page 697)



CUUS® Type 4/4X/12



according to IEC/EN 60529