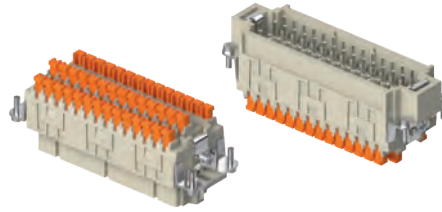


CDSH-SQUICH® 42 poles + ⊕ 10A - 400V

enclosures: size "104.27"	page:
C-TYPE IP65/IP66	412 - 423
C7 IP67, two levers	441 - 442
V-TYPE IP65/IP66, single lever	459 - 463
BIG hoods	472 - 473
T-TYPE IP65 insulating	486 - 487
T-TYPE / W IP66/IP69 insulating	492
HYGIENIC T-TYPE / H IP66/IP69	504
HYGIENIC T-TYPE / C IP66/IP69, -50 °C	509
W-TYPE for aggressive environments	524
E-Xtreme® corrosion proof	536 - 537, 545, 556 - 557
EMC	581
Central lever	612 - 614
LS-TYPE	624 - 625
IP68	644 - 647
panel supports: COB	page: 652 - 653

inserts, spring terminal connections without tools

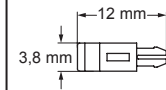
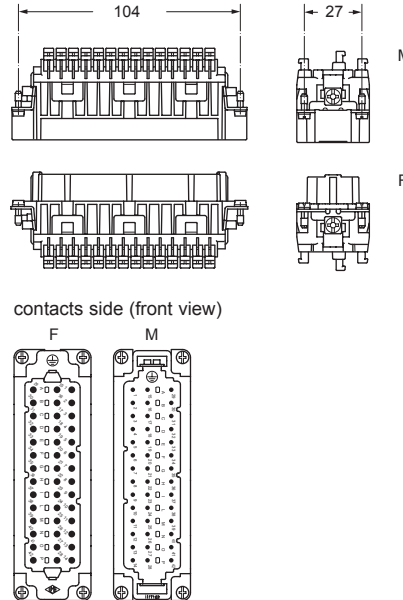


coding pins



description	part No.	part No.
spring terminals with actuator button	CDSHF 42	CR CDS
female inserts with female contacts	CDSHM 42	
male inserts with male contacts		
plastic coding pins		

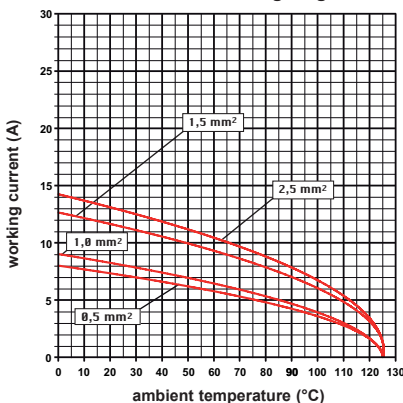
- characteristics according to EN 61984:
10A 400V 6kV 3
10A 400V/690V 6kV 2
- certified
- rated voltage according to UL/CSA: 600V
- insulation resistance: ≥ 10 GΩ
- ambient temperature limit: -40 °C ... +125 °C
- made of self-extinguishing thermoplastic resin UL 94V-0
- mechanical life: ≥ 500 cycles
- contact resistance: ≤ 3 mΩ
- for max. current load see the connector inserts derating diagram below; for more information see page 28



CDSH series - Coding with CR CDS pins

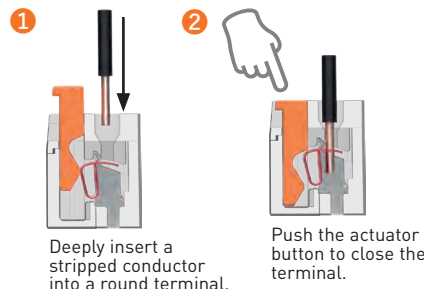
Size of connectors	Slots for coding pins (M) = male insert (F) = female insert	Required coding pins for each coupling	Possible codings
42P + ⊕	14 (M) + 14 (F)	14 7 (M) + 7 (F)	3.432

CDSH 42 poles connector inserts
Maximum current load derating diagram



- inserts for conductors cross-sectional areas: 0,14 - 2,5 mm² - AWG 26 - 14
- for wires with crimped ferrule, usable section: up to 1,5 mm² (AWG 16)
- conductors stripping length: 9...11 mm

SQUICH®-spring connection technology WIRING



RE-OPENING

