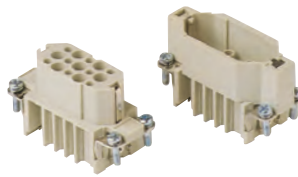


CD 15 poles + ⊕ 10A - 250V

enclosures: size "49.16"	page:
IL-BRID	374 - 377, 382
CZ7 IP67, single lever	384
W-TYPE for aggressive environments	519
E-Xtreme® corrosion proof	540
EMC	576

panel supports: COB + adaptor	page: 652 - 654
----------------------------------	--------------------

inserts, crimp connections



10A crimp contacts silver and gold plated



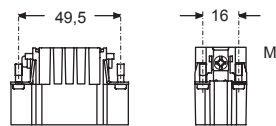
description	part No.	part No.	part No.
without contacts (to be ordered separately)			
female inserts for female contacts	CD F 15		
male inserts for male contacts	CD M 15		
10A female contacts			
0,14-0,37 mm ² AWG 26-22 identification No. 1		CDFA 0.3	CDFD 0.3
0,5 mm ² AWG 20 identification No. 2		CDFA 0.5	CDFD 0.5
0,75 mm ² AWG 18 identification No. ②		CDFA 0.7	CDFD 0.7
1 mm ² AWG 18 identification No. 3		CDFA 1.0	CDFD 1.0
1,5 mm ² AWG 16 identification No. 4		CDFA 1.5	CDFD 1.5
2,5 mm ² AWG 14 identification No. 5		CDFA 2.5	CDFD 2.5
10A male contacts			
0,14-0,37 mm ² AWG 26-22 identification No. 1		CDMA 0.3	CDMD 0.3
0,5 mm ² AWG 20 identification No. 2		CDMA 0.5	CDMD 0.5
0,75 mm ² AWG 18 identification No. ②		CDMA 0.7	CDMD 0.7
1 mm ² AWG 18 identification No. 3		CDMA 1.0	CDMD 1.0
1,5 mm ² AWG 16 identification No. 4		CDMA 1.5	CDMD 1.5
2,5 mm ² AWG 14 identification No. 5		CDMA 2.5	CDMD 2.5

- characteristics according to EN 61984:

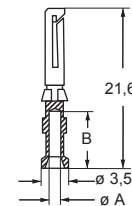
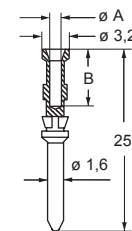
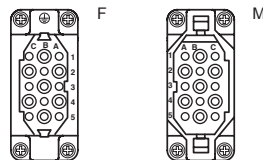
10A 250V 4kV 3
10A 230/400V 4kV 2

- cULus (UL for USA and Canada),
BUREAU VERITAS EAC certified

- rated voltage according to UL/CSA: 600V
- insulation resistance: ≥ 10 GΩ
- ambient temperature limit: -40 °C ... +125 °C
- made of self-extinguishing thermoplastic resin UL 94V-0
- mechanical life: ≥ 500 cycles
- contact resistance: ≤ 3 mΩ
- for applications requiring higher voltages, please see the special voltage application section on page 65
- **it is recommended to crimp the contacts with crimping tools homologated by ILME** (please see the crimping tool section 10A contacts, CDF and CDM series on pages 708 - 741)
- for max. current load see the connector inserts derating diagram below; for more information see page 28



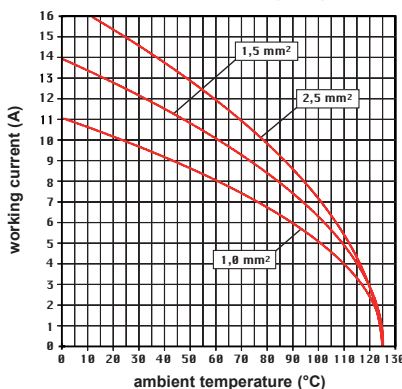
contacts side (front view)



CDF and CDM contacts

conductor section mm ²	conductor slot ø A (mm)	conductors stripping length B (mm)
0,14-0,37	0,9	8
0,5	1,1	8
0,75	1,3	8
1,0	1,45	8
1,5	1,8	8
2,5	2,2	6

CD 15 poles connector inserts
Maximum current load derating diagram



CR CP coding pin with loss of one contact (page 689)



† for basic or high thickness gold plating, please refer to page 674