

# CD 7 poles + ⊕ 10A - 250V

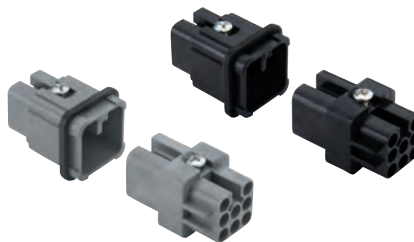
enclosures:  
size "21.21"

page:

Insulating type

339 - 348

## inserts, crimp connections



## 10A crimp contacts silver and gold plated



description	part No.	part No.	part No.	part No.
without contacts (to be ordered separately)	grey	black		
female inserts for female contacts, grey and black <sup>1)</sup>	<b>CDF 07</b>	<b>CDF 07 N</b>		
male inserts for male contacts, grey and black	<b>CDM 07</b>	<b>CDM 07 N</b>		
<b>10A female contacts</b>				
0,14-0,37 mm <sup>2</sup> AWG 26-22 identification No. 1			<b>CDFA 0.3</b>	<b>CDFD 0.3</b>
0,5 mm <sup>2</sup> AWG 20 identification No. 2			<b>CDFA 0.5</b>	<b>CDFD 0.5</b>
0,75 mm <sup>2</sup> AWG 18 identification No. ②			<b>CDFA 0.7</b>	<b>CDFD 0.7</b>
1 mm <sup>2</sup> AWG 18 identification No. 3			<b>CDFA 1.0</b>	<b>CDFD 1.0</b>
1,5 mm <sup>2</sup> AWG 16 identification No. 4			<b>CDFA 1.5</b>	<b>CDFD 1.5</b>
2,5 mm <sup>2</sup> AWG 14 identification No. 5			<b>CDFA 2.5</b>	<b>CDFD 2.5</b>
<b>10A male contacts</b>				
0,14-0,37 mm <sup>2</sup> AWG 26-22 identification No. 1			<b>CDMA 0.3</b>	<b>CDMD 0.3</b>
0,5 mm <sup>2</sup> AWG 20 identification No. 2			<b>CDMA 0.5</b>	<b>CDMD 0.5</b>
0,75 mm <sup>2</sup> AWG 18 identification No. ②			<b>CDMA 0.7</b>	<b>CDMD 0.7</b>
1 mm <sup>2</sup> AWG 18 identification No. 3			<b>CDMA 1.0</b>	<b>CDMD 1.0</b>
1,5 mm <sup>2</sup> AWG 16 identification No. 4			<b>CDMA 1.5</b>	<b>CDMD 1.5</b>
2,5 mm <sup>2</sup> AWG 14 identification No. 5			<b>CDMA 2.5</b>	<b>CDMD 2.5</b>

silver plated

gold plated+

1) the female inserts can be mounted into the straight bulkhead housings CK I from the rear

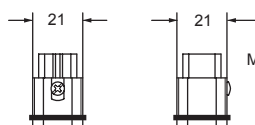
- characteristics according to EN 61984:

**10A 250V 4kV 3**  
**10A 230/400V 4kV 2**

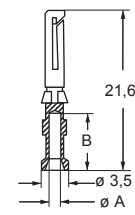
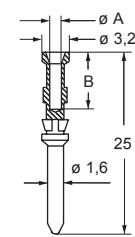
- certified

certified

- rated voltage according to UL/CSA: 600V
- insulation resistance: ≥ 10 GΩ
- ambient temperature limit: -40 °C ... +125 °C
- made of self-extinguishing thermoplastic resin UL 94V-0
- mechanical life: ≥ 500 cycles
- contact resistance: ≤ 3 mΩ
- for applications requiring higher voltages, please see the special voltage application section on page 65
- **it is recommended to crimp the contacts with crimping tools homologated by ILME** (please see the crimping tool section 10A contacts, CDF and CDM series on pages 708 - 741)
- for max. current load see the connector inserts derating diagram below; for more information see page 28



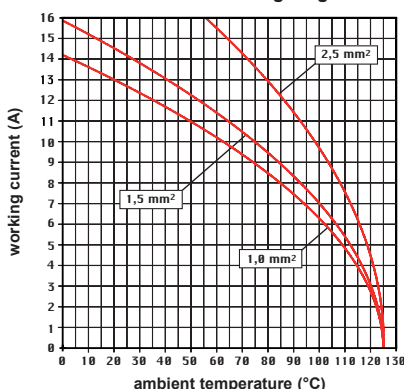
contacts side (front view)



### CDF and CDM contacts

conductor section mm <sup>2</sup>	conductor slot ø A (mm)	conductors stripping length B (mm)
0,14-0,37	0,9	8
0,5	1,1	8
0,75	1,3	8
1,0	1,45	8
1,5	1,8	8
2,5	2,2	6

**CD 07 poles connector inserts**  
**Maximum current load derating diagram**



**CR CP coding pin with loss of one contact (page 689)**



+ for basic or high thickness gold plating, please refer to page 674