

CDD 144 poles + 10A - 250V

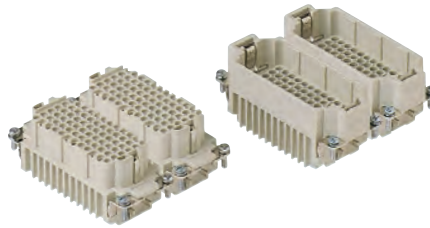
enclosures:
size "77.62"

page:

C-TYPE IP65/IP66
W-TYPE for aggressive environments
E-Xtreme® corrosion proof

424 - 429
525
546

inserts, crimp connections



10A crimp contacts silver and gold plated



PCBs interface, see article CIF 2.4 on page 670

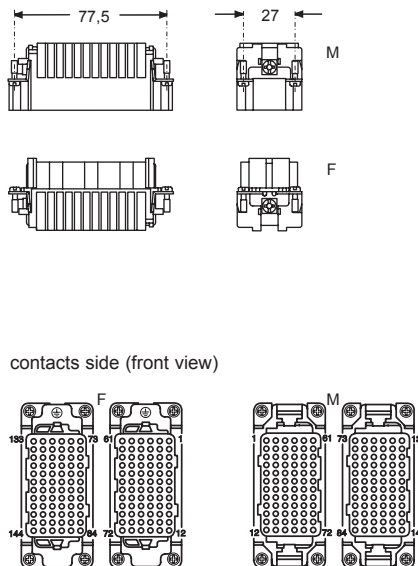
description	part No.	part No.	part No.	part No.
without contacts (to be ordered separately)				
female inserts, No. (1-72) and (73-144)				
male inserts, No. (1-72) and (73-144)				
10A female contacts				
0,14-0,37 mm ² AWG 26-22 identification No. 1			CDFA 0.3	CDFD 0.3
0,5 mm ² AWG 20 identification No. 2	CDDF 72	CDDF 72 N	CDFA 0.5	CDFD 0.5
0,75 mm ² AWG 18 identification No. ②	CDDM 72	CDDM 72 N	CDFA 0.7	CDFD 0.7
1 mm ² AWG 18 identification No. 3			CDFA 1.0	CDFD 1.0
1,5 mm ² AWG 16 identification No. 4			CDFA 1.5	CDFD 1.5
2,5 mm ² AWG 14 identification No. 5			CDFA 2.5	CDFD 2.5
10A male contacts				
0,14-0,37 mm ² AWG 26-22 identification No. 1			CDMA 0.3	CDMD 0.3
0,5 mm ² AWG 20 identification No. 2			CDMA 0.5	CDMD 0.5
0,75 mm ² AWG 18 identification No. ②			CDMA 0.7	CDMD 0.7
1 mm ² AWG 18 identification No. 3			CDMA 1.0	CDMD 1.0
1,5 mm ² AWG 16 identification No. 4			CDMA 1.5	CDMD 1.5
2,5 mm ² AWG 14 identification No. 5			CDMA 2.5	CDMD 2.5

- characteristics according to EN 61984:

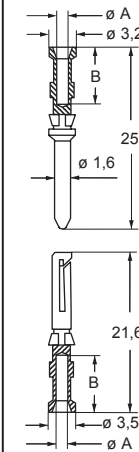
10A 250V 4kV 2

- cULus (UL for USA and Canada), certified

- rated voltage according to UL/CSA: 600V
- insulation resistance: $\geq 10 \text{ G}\Omega$
- ambient temperature limit: $-40 \text{ }^\circ\text{C} \dots +125 \text{ }^\circ\text{C}$
- made of self-extinguishing thermoplastic resin UL 94V-0
- mechanical life: ≥ 500 cycles
- contact resistance: $\leq 3 \text{ m}\Omega$
- for applications requiring higher voltages, please see the special voltage application section on page 75
- **it is recommended to crimp the contacts with crimping tools homologated by ILME** (please see the crimping tool section 10A contacts, CDF and CDM series on pages 708 - 741)
- for max. current load see the connector inserts derating diagram below; for more information see page 28



contacts side (front view)

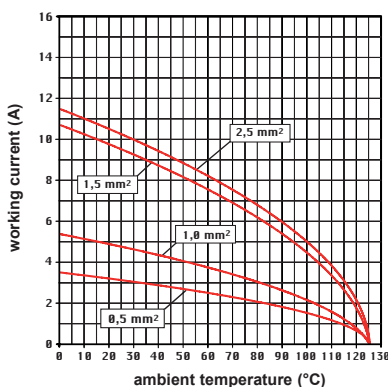


CDF and CDM contacts

conductor section mm ²	conductor slot ϕA (mm)	conductors stripping length B (mm)
0,14-0,37	0,9	8
0,5	1,1	8
0,75	1,3	8
1,0	1,45	8
1,5	1,8	8
2,5	2,2	6

† for basic or high thickness gold plating, please refer to page 674

CDD 144 poles connector inserts Maximum current load derating diagram



CR CP coding pin with loss of one contact (page 689)

