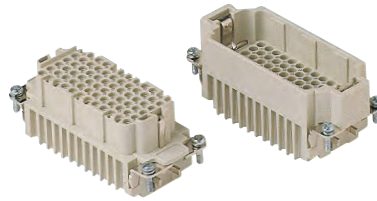


# CDD 72 poles + ⊕ 10A - 250V

enclosures: size "77.27"	page:
C-TYPE IP65/IP66	402 - 411
C7 IP67, two levers	439 - 440
V-TYPE IP65/IP66, single lever	454 - 458
BIG hoods	470 - 471
T-TYPE IP65 insulating	484 - 485
T-TYPE / W IP66/IP69 insulating	491
HYGIENIC T-TYPE / H IP66/IP69	503
HYGIENIC T-TYPE / C IP66/IP69, -50 °C	508
W-TYPE for aggressive environments	523
E-Xtreme® corrosion proof	534 - 535, 544, 554 - 555
EMC	580
Central lever	609 - 611
LS-TYPE	622 - 623
IP68	640 - 643
panel supports: COB	page: 652 - 653

## inserts, crimp connections



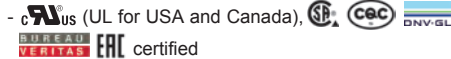
## 10A crimp contacts silver and gold plated



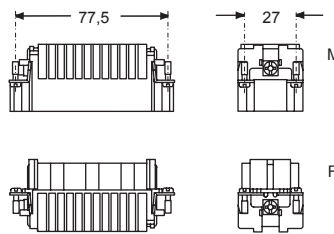
description	part No.	part No.	part No.
without contacts (to be ordered separately)			
female inserts for female contacts	<b>CDDF 72</b>		
male inserts for male contacts	<b>CDDM 72</b>		
10A female contacts			
0,14-0,37 mm <sup>2</sup> AWG 26-22 identification No. 1		<b>CDFA 0.3</b>	<b>CDFD 0.3</b>
0,5 mm <sup>2</sup> AWG 20 identification No. 2		<b>CDFA 0.5</b>	<b>CDFD 0.5</b>
0,75 mm <sup>2</sup> AWG 18 identification No. ②		<b>CDFA 0.7</b>	<b>CDFD 0.7</b>
1 mm <sup>2</sup> AWG 18 identification No. 3		<b>CDFA 1.0</b>	<b>CDFD 1.0</b>
1,5 mm <sup>2</sup> AWG 16 identification No. 4		<b>CDFA 1.5</b>	<b>CDFD 1.5</b>
2,5 mm <sup>2</sup> AWG 14 identification No. 5		<b>CDFA 2.5</b>	<b>CDFD 2.5</b>
10A male contacts			
0,14-0,37 mm <sup>2</sup> AWG 26-22 identification No. 1		<b>CDMA 0.3</b>	<b>CDMD 0.3</b>
0,5 mm <sup>2</sup> AWG 20 identification No. 2		<b>CDMA 0.5</b>	<b>CDMD 0.5</b>
0,75 mm <sup>2</sup> AWG 18 identification No. ②		<b>CDMA 0.7</b>	<b>CDMD 0.7</b>
1 mm <sup>2</sup> AWG 18 identification No. 3		<b>CDMA 1.0</b>	<b>CDMD 1.0</b>
1,5 mm <sup>2</sup> AWG 16 identification No. 4		<b>CDMA 1.5</b>	<b>CDMD 1.5</b>
2,5 mm <sup>2</sup> AWG 14 identification No. 5		<b>CDMA 2.5</b>	<b>CDMD 2.5</b>

- characteristics according to EN 61984:

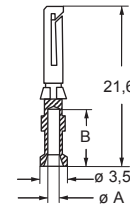
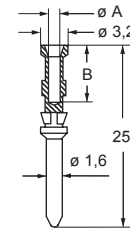
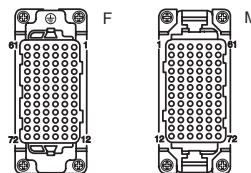
### 10A 250V 4kV 2



- rated voltage according to UL/CSA: 600V
- insulation resistance: ≥ 10 GΩ
- ambient temperature limit: -40 °C ... +125 °C
- made of self-extinguishing thermoplastic resin UL 94V-0
- mechanical life: ≥ 500 cycles
- contact resistance: ≤ 3 mΩ
- for applications requiring higher voltages, please see the special voltage application section on page 75
- **it is recommended to crimp the contacts with crimping tools homologated by ILME** (please see the crimping tool section 10A contacts, CDF and CDM series on pages 708 - 741)
- for max. current load see the connector inserts derating diagram below; for more information see page 28



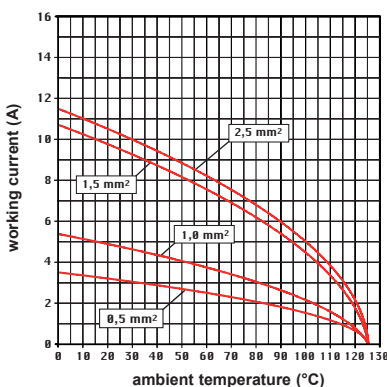
contacts side (front view)



### CDF and CDM contacts

conductor section mm <sup>2</sup>	conductor slot ø A (mm)	conductors stripping length B (mm)
0,14-0,37	0,9	8
0,5	1,1	8
0,75	1,3	8
1,0	1,45	8
1,5	1,8	8
2,5	2,2	6

CDD 72 poles connector inserts  
Maximum current load derating diagram



CR CP coding pin with loss of one contact (page 689)



+ for basic or high thickness gold plating, please refer to page 674