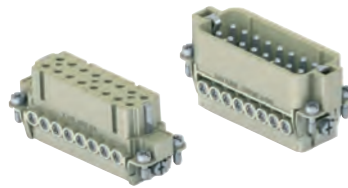


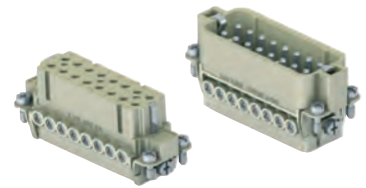
CDA 16 poles + ⊕ 16A - 250V

enclosures: size "66.16"	page:
IL-BRID	378 - 382
CZ7 IP67, single lever	385
W-TYPE for aggressive environments	520
E-Xtreme® corrosion proof	541
EMC	577
panel supports: COB + adaptor	page: 652 - 654

inserts, screw terminal connection

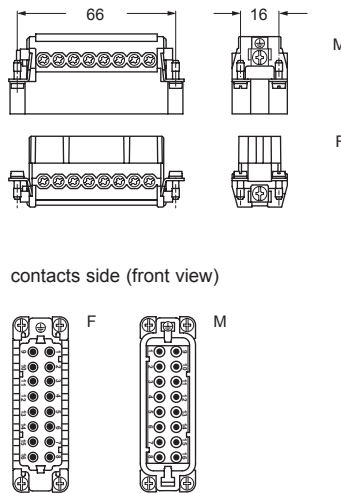


inserts, screw terminal connection

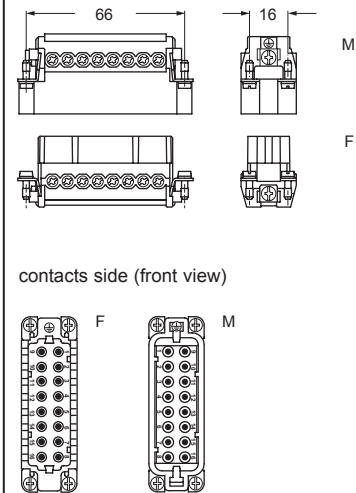


description	part No.	part No.
indirect, with pressure plate ¹⁾ female inserts with female contacts male inserts with male contacts	CDAF 16 CDAM 16	
direct, without pressure plate ²⁾ female inserts with female contacts male inserts with male contacts		CDAF 16 X CDAM 16 X

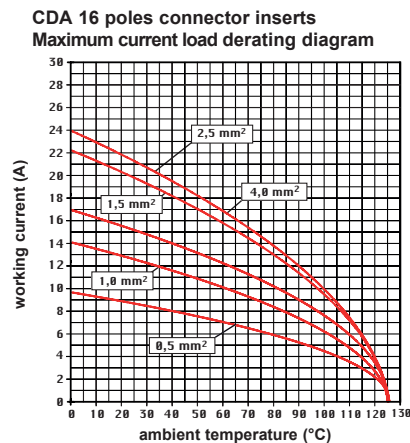
- characteristics according to EN 61984:
16A 250V 4kV 3
16A 230/400V 4kV 2
- (UL for USA and Canada),
- certified
- rated voltage according to UL/CSA: 600V
- insulation resistance: ≥ 10 GΩ
- ambient temperature limit: -40 °C ... +125 °C
- made of self-extinguishing thermoplastic resin UL 94V-0
- mechanical life: ≥ 500 cycles
- contact resistance: ≤ 1 mΩ
- according to recommendations EUROMAP N° 13 / N° 14.1
- for max. current load see the connector inserts derating diagram below; for more information see page 28



- inserts with pressure plate for conductors cross-sections:
0,5 - 4 mm² - AWG 20 - 12
- conductors stripping length: 7 mm
- terminal screw torque: 0,5 Nm (4.4 lb.in), for more information see page 20 and 21



- inserts without pressure plate for prepared conductors with cross-sections:
0,25 - 2,5 mm² - AWG 24 - 14
- terminal screw torque: 0,5 Nm (4.4 lb.in), for more information see page 20 and 21



¹⁾ for unprepared conductors



²⁾ for conductors with end sleeve ferrule

