

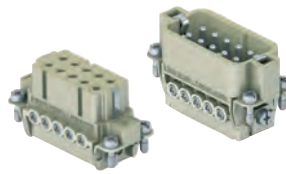
CDA 10 poles + ⊕ 16A - 250V

enclosures:
size "49.16" page:

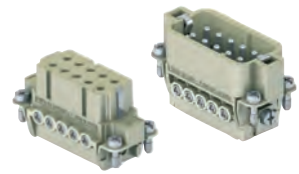
IL-BRID 374 - 377, 382
 CZ7 IP67, single lever 384
 W-TYPE for aggressive environments 519
 E-Xtreme® corrosion proof 540
 EMC 576

panel supports: page:
 COB + adaptor 652 - 654

inserts, screw terminal connection



inserts, screw terminal connection



description

part No.

part No.

indirect, with pressure plate ¹⁾
 female inserts with female contacts
 male inserts with male contacts

CDAF 10
CDAM 10

direct, without pressure plate ²⁾
 female inserts with female contacts
 male inserts with male contacts

CDAF 10 X
CDAM 10 X

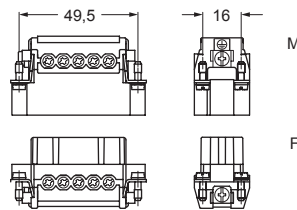
- characteristics according to EN 61984:

16A 250V 4kV 3
16A 230/400V 4kV 2

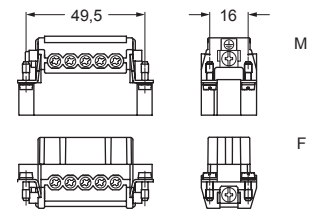
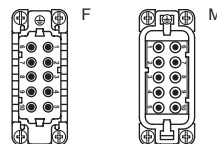
- us (UL for USA and Canada),

certified

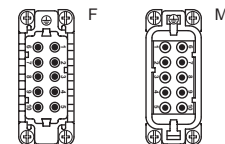
- rated voltage according to UL/CSA: 600V
- insulation resistance: ≥ 10 GΩ
- ambient temperature limit: -40 °C ... +125 °C
- made of self-extinguishing thermoplastic resin UL 94V-0
- mechanical life: ≥ 500 cycles
- contact resistance: ≤ 1 mΩ
- according to recommendations EUROMAP N° 16
- for max. current load see the connector inserts derating diagram below; for more information see page 28



contacts side (front view)



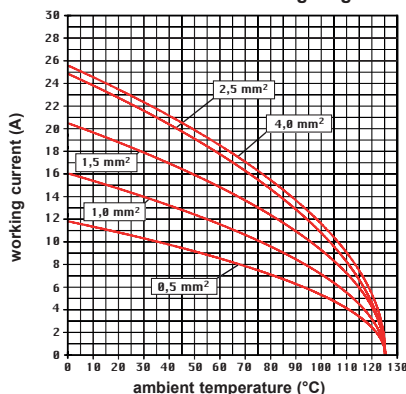
contacts side (front view)



- inserts with pressure plate for conductors cross-sections:
0,5 - 4 mm² - AWG 20 - 12
- conductors stripping length: 7 mm
- terminal screw torque: 0,5 Nm (4.4 lb.in), for more information see page 20 and 21

- inserts without pressure plate for prepared conductors with cross-sections:
0,25 - 2,5 mm² - AWG 24 - 14
- terminal screw torque: 0,5 Nm (4.4 lb.in), for more information see page 20 and 21

CDA 10 poles connector inserts
Maximum current load derating diagram



¹⁾ for unprepared conductors



²⁾ for conductors with end sleeve ferrule

