

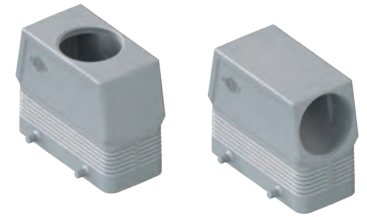
**CH - CA - CF and MH - MA - MF C-TYPE standard version**

inserts		page:
CD	40 poles + ⊕	70
CDD	72 poles + ⊕	79
CDS	27 poles + ⊕	-
CDSH	27 poles + ⊕	88
CNE	16 poles + ⊕	112
CSE	16 poles + ⊕	-
CSH	16 poles + ⊕	112
CSH S	16 poles + ⊕	124
CCE	16 poles + ⊕	132
CMSH, CMCE	6+2 (aux) poles + ⊕	138 - 139
CSS	16 poles + ⊕	150
CQE	32 poles + ⊕	170
CQEE	40 poles + ⊕	176
CP	6 poles + ⊕	178
CX	6/12, 6/36 and 12/2 poles + ⊕	197 - 199
CX	4/0 and 4/2 poles + ⊕	200 - 201
MIXO	4 modules	262 - 317

**hoods with 4 pegs**



**hoods with 4 pegs  
M40 cable entry with 20 mm thread length**



description	part No.	entry Pg	part No	entry M	part No.	entry Pg	part No.	entry M
with pegs, side entry	<b>CHO 16</b>	21	<b>MHO 16.25</b>	25				
with pegs, side entry			<b>MHO 16.32</b>	32				
with pegs, side entry, high construction	<b>CAO 16.21</b>	21	<b>MAO 16.32</b>	32				
with pegs, side entry, high construction	<b>CAO 16.29</b>	29	<b>MAO 16.40</b>	40				
with pegs, side entry, high construction, without adapter 1)					<b>CFO 16.21</b>	21	<b>MFO 16.32</b>	32
with pegs, side entry, high construction, without adapter 1)					<b>CFO 16.29</b>	29	<b>MFO 16.40</b>	40
with pegs, top entry	<b>CHV 16</b>	21						
with pegs, top entry 2)			<b>MHV 16.25</b>	25				
with pegs, top entry			<b>MHV 16.32</b>	32				
with pegs, top entry, high construction	<b>CAV 16.21</b>	21	<b>MAV 16.32</b>	32				
with pegs, top entry, high construction	<b>CAV 16.29</b>	29	<b>MAV 16.40</b>	40				
with pegs, top entry, high construction, without adapter 1)					<b>CFV 16.21</b>	21	<b>MFV 16.32</b>	32
with pegs, top entry, high construction, without adapter 1)					<b>CFV 16.29</b>	29	<b>MFV 16.40</b>	40
with pegs, frontal entry, high construction	<b>CAF 16</b>	21	<b>MAF 16.25</b>	25				
with pegs, frontal entry, high construction, without adapter 1)	<b>CFF 16</b>	21	<b>MFF 16.25</b>	25				

1) enclosure without adapter, threaded on the body, to be used only with a complete cable gland.

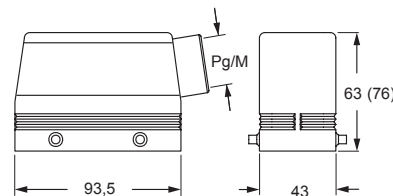
2) can only be used with a complete cable gland (to be purchased separately).

IP degrees are according to the type of lever of the counterpart enclosures.

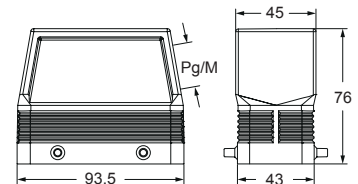
Alternatively, hoods with pegs may be coupled with fixed enclosures:

- C-TYPE, IP65 or IP66/IP69 stainless steel lever, from page 402 to page 410
- C7, IP66/IP67/IP69 stainless steel lever, page 439
- CV, IP65 or IP66/IP69 stainless steel lever, page 454 and 455.

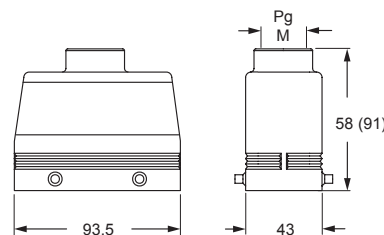
**CHO (CAO) and MHO (MAO)**



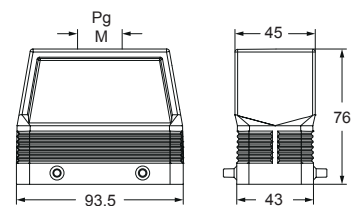
**CFO and MFO**



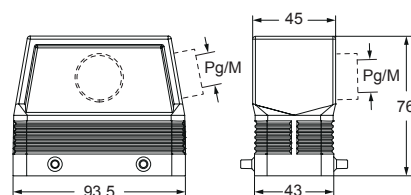
**CHV (CAV) and MHV (MAV)**



**CFV and MFV**



**CAF/CFF and MAF/MFF**



**CALUS** Type 4/4X/12



insulating cable gland or fittings without gasket



cable gland with O-Ring gasket  
IP67 if hoods without adapters coupled with IP67 housings