

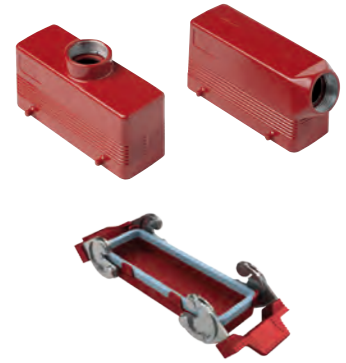
# CH - CA and MH - MA 180 °C version

inserts		page:
CNE RY	24 poles + ⊕	119
CX RY	4/8 poles + ⊕	204

## bulkhead and surface mounting housings and cover

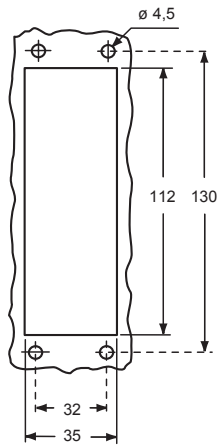


## hoods and cover

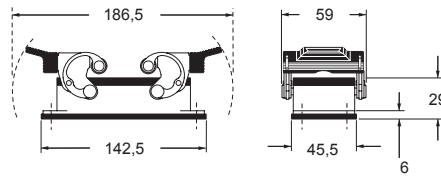


description	part No.	entry Pg	part No.	entry M	part No.	entry Pg	part No.	entry M
bulkhead mounting housing with levers and gasket	<b>CHIR 24</b>	--						
surface mounting housing, with levers, high construction	<b>CAPR 24.21</b>	21	<b>MAPR 24.32</b>	32				
cover with 4 pegs (for enclosures) <sup>1)</sup>	<b>CHCR 24</b>							
enclosure with pegs, side entry					<b>CHOR 24</b>	21	<b>MHOR 24.25</b>	25
enclosure with pegs, side entry, high construction					<b>CAOR 24.29</b>	29	<b>MAOR 24.40</b>	40
enclosure with pegs, top entry					<b>CHVR 24</b>	21	<b>MHVR 24.25</b>	25
enclosure with pegs, top entry, high construction					<b>CAVR 24.29</b>	29	<b>MAVR 24.40</b>	40
cover with 2 levers (for hoods) <sup>2)</sup>					<b>CHCR 24 G</b>			

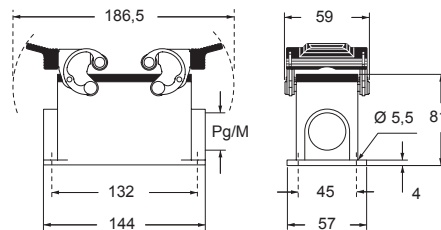
### panel cut-out for bulkhead mounting housings



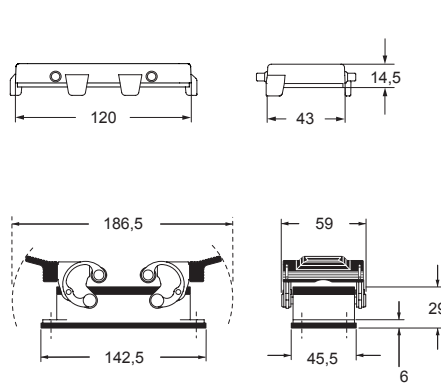
### CHIR



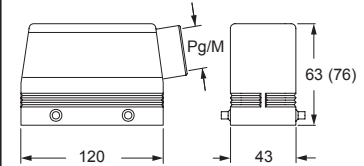
### CAPR and MAPR



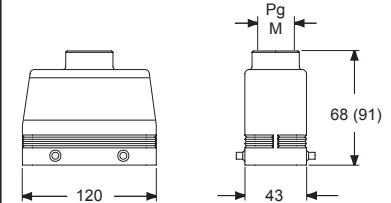
### CHCR



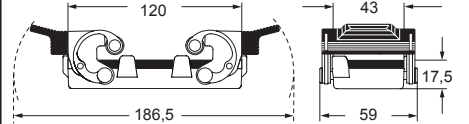
### CHOR (CAOR) and MHOR (MAOR)



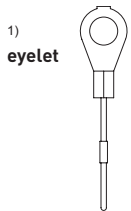
### CHVR (CAVR) and MHVR (MAVR)



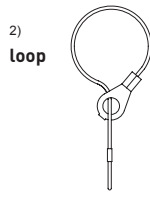
### CHCR G



### For fixing on housings



### For fixing on hoods



**CAIUS** Type 4/4X/12



180 °C