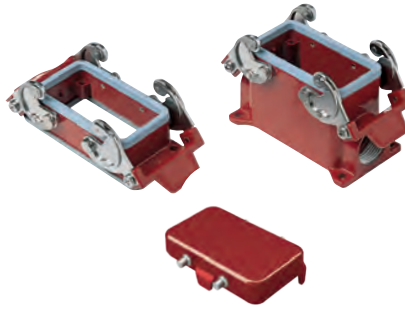


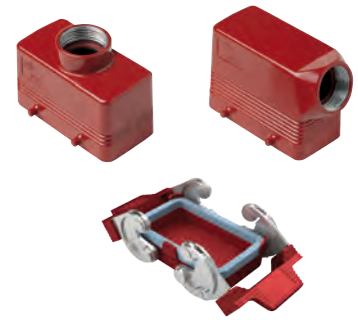
CH - CA and MH - MA 180 °C version

inserts
CNE RY 10 poles + ⊕ page: 117

bulkhead and surface mounting housings and cover



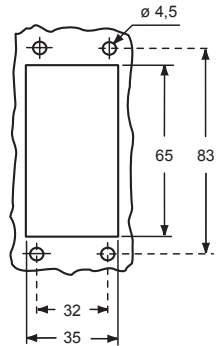
hoods and cover



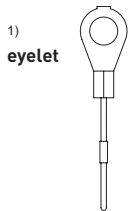
description	part No.	entry Pg	part No.	entry M	part No.	entry Pg	part No.	entry M
bulkhead mounting housing with levers and gasket	CHIR 10	–						
surface mounting housing, with levers	CHPR 10	16	MHPR 10.20	20				
surface mounting housing, with levers, high construction	CAPR 10.21	21	MAPR 10.32	32				
cover with 4 pegs (for enclosures) ¹⁾	CHCR 10							
enclosure with pegs, side entry					CHOR 10	16	MHOR 10.20	20
enclosure with pegs, side entry, high construction					CAOR 10.21	21	MAOR 10.32	32
enclosure with pegs, top entry					CHVR 10	16		
enclosure with pegs, top entry ³⁾							MHVR 10.20	20
enclosure with pegs, top entry, high construction					CAVR 10.21	21	MAVR 10.32	32
cover with 2 levers (for hoods) ²⁾					CHCR 10 G			

³⁾ can only be used with a complete cable gland (to be purchased separately)

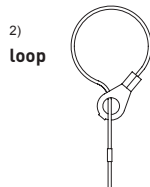
panel cut-out for bulkhead mounting housings



For fixing on housings



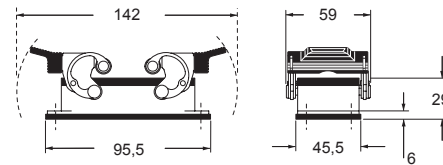
For fixing on hoods



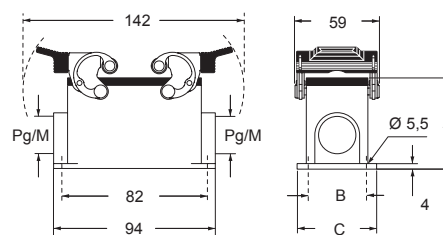
CAIUS Type 4/4X/12



CHIR



CHPR - CAPR and MHPR - MAPR

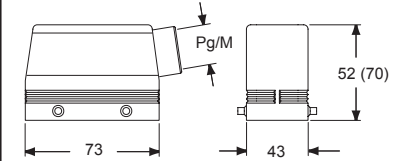


type	A	B	C
CHPR / MHPR	57	40	52
CAPR / MAPR	74	45	57

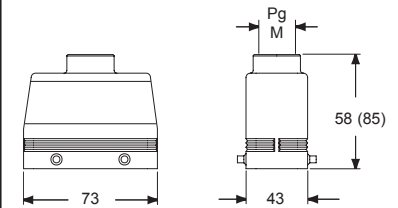
CHCR



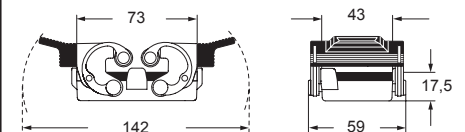
CHOR (CAOR) and MHOR (MAOR)



CHVR (CAVR) and MHVR³⁾ (MAVR)



CHCR G



180 °C