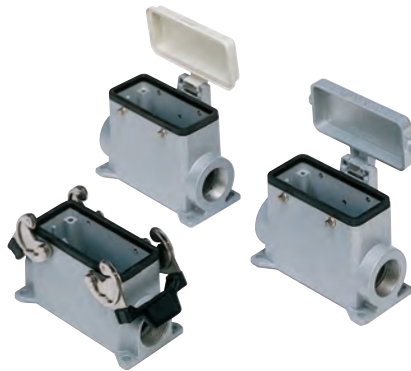


CH - CA and MH - MA C-TYPE standard version

inserts		page:
CD	40 poles + ⊕	70
CDD	72 poles + ⊕	79
CDS	27 poles + ⊕	-
CDSH	27 poles + ⊕	88
CNE	16 poles + ⊕	112
CSE	16 poles + ⊕	-
CSH	16 poles + ⊕	112
CSH S	16 poles + ⊕	124
CCE	16 poles + ⊕	132
CMSH, CMCE	6+2 (aux) poles + ⊕	138 - 139
CSS	16 poles + ⊕	150
CQE	32 poles + ⊕	170
CQEE	40 poles + ⊕	176
CP	6 poles + ⊕	178
CX	6/12, 6/36 and 12/2 poles + ⊕	197 - 199
CX	4/0 and 4/2 poles + ⊕	200 - 201
MIXO	4 modules	262 - 317

surface mounting housings with 2 levers or 4 pegs



surface mounting housings with single lever



description	part No.	entry Pg	part No.	entry M	part No.	entry Pg	part No.	entry M
with lever/s	CHP 16	21	MHP 16.25	25	CHP 16 L	21	MHP 16 L25	25
with lever/s	CHP 16.2	21 x 2	MHP 16.225	25 x 2	CHP 16 L2	21 x 2	MHP 16 L225	25 x 2
with levers, high construction 1)			MAP 16.25	25			MHP 16 L225	25 x 2
with levers, high construction 1)			MAP 16.225	25 x 2				
with lever/s, high construction	CAP 16.21	21	MAP 16.32	32	CAP 16 L	21	MAP 16 L32	32
with lever/s, high construction	CAP 16.221	21 x 2	MAP 16.232	32 x 2	CAP 16 L2	21 x 2	MAP 16 L232	32 x 2
with lever/s, high construction	CAP 16.29	29	MAP 16.40	40	CAP 16 L29	29	MAP 16 L40	40
with lever/s, high construction	CAP 16.229	29 x 2	MAP 16.240	40 x 2	CAP 16 L229	29 x 2	MAP 16 L240	40 x 2
with pegs and aluminum cover 2)	CHP 16 CS	21	MHP 16 CS25	25				
with pegs and aluminum cover 2)	CHP 16 CS2	21 x 2	MHP 16 CS225	25 x 2				
with pegs and aluminum cover, high construction 2)	CAP 16 CS	21	MAP 16 CS32	32				
with pegs and aluminum cover, high construction 2)	CAP 16 CS2	21 x 2	MAP 16 CS232	32 x 2				
with pegs and aluminum cover, high construction 2)	CAP 16 CS29	29	MAP 16 CS40	40				
with pegs and aluminum cover, high construction 2)	CAP 16 CS229	29 x 2	MAP 16 CS240	40 x 2				
with pegs and plastic cover 2)	CHP 16 CP	21	MHP 16 CP25	25				
with pegs and plastic cover 2)	CHP 16 CP2	21 x 2	MHP 16 CP225	25 x 2				
with pegs and plastic cover, high construction 2)	CAP 16 CP	21	MAP 16 CP32	32				
with pegs and plastic cover, high construction 2)	CAP 16 CP2	21 x 2	MAP 16 CP232	32 x 2				
with pegs and plastic cover, high construction 2)	CAP 16 CP29	29	MAP 16 CP40	40				
with pegs and plastic cover, high construction 2)	CAP 16 CP229	29 x 2	MAP 16 CP240	40 x 2				
with lever and aluminium cover					CHP 16 LS	21	MHP 16 LS25	25
with lever and aluminium cover					CHP 16 LS2	21 x 2	MHP 16 LS225	25 x 2
with lever and aluminium cover, high construction					CAP 16 LS	21	MAP 16 LS32	32
with lever and aluminium cover, high construction					CAP 16 LS2	21 x 2	MAP 16 LS232	32 x 2
with lever and aluminium cover, high construction					CAP 16 LS29	29	MAP 16 LS40	40
with lever and aluminium cover, high construction					CAP 16 LS229	29 x 2	MAP 16 LS240	40 x 2

1) can only be used with a complete cable gland (to be purchased separately)

2) may be combined with enclosures:
 - CHO/CAO 16 X and CHV/CAV 16 X
 - MHO/MAO 16 X and MHV/MAV 16 X

IMPORTANT NOTE: The enclosures ensure IP66/IP69 degree of protection (or IP65 for hinged cover versions) when mated and locked with the closing levers. The cover (CS, CP) only ensures mechanical protection, but does not ensure IP65 degree of protection.

CR CLK
locking device for CLASS locking levers (page 666)



CALUS Type 4/4X/12
(except enclosures with plastic cover)

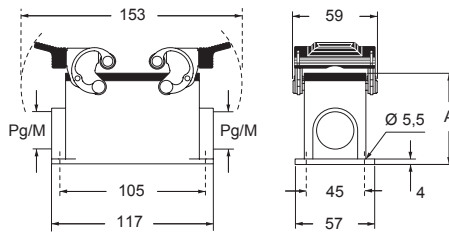


insulating cable gland or fittings without gasket

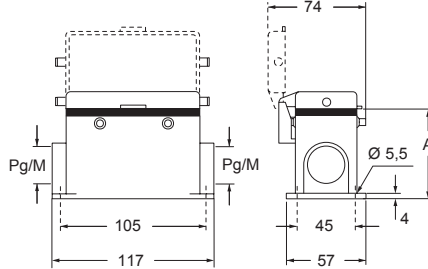


cable gland with O-Ring gasket

CHP - CAP and MHP - MAP ▲

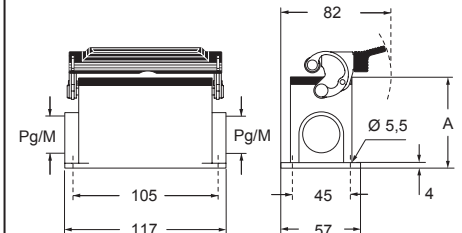


CHP CS/CP - CAP CS/CP and MHP CS/CP - MAP CS/CP ●

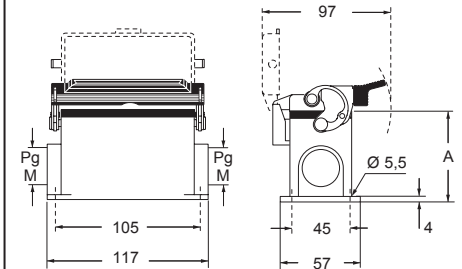


type	A
CHP / MHP	63
CAP / MAP	81
CHP CS / MHP CS	63
CAP CS / MAP CS	81
CHP CP / MHP CP	63
CAP CP / MAP CP	81

CHP L - CAP L and MHP L - MAP L ▲



CHP LS - CAP LS and MHP LS - MAP LS ●



type	A
CHP L / MHP L	63
CAP L / MAP L	81
CHP LS / MHP LS	63
CAP LS / MAP LS	81