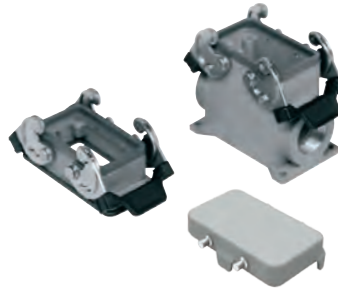


CH - CA and MA EMC version for electromagnetic compatibility

inserts		page:
CDD	42 poles + ⊕	78
CDS	18 poles + ⊕	-
CDSH	18 poles + ⊕	87
CNE	10 poles + ⊕	111
CSE	10 poles + ⊕	-
CSH	10 poles + ⊕	111
CSH S	10 poles + ⊕	123
CCE	10 poles + ⊕	131
CMSH	3+2 (aux) poles + ⊕	136
CMCE	3+2 (aux) poles + ⊕	137
CSS	10 poles + ⊕	149
CT, CTSE (16A) *)	10 poles + ⊕	161
CQE	18 poles + ⊕	169
CX	8/24 poles + ⊕	194
MIXO	3 modules	262 - 317

*) only for enclosure CHIS 10

housings and cover

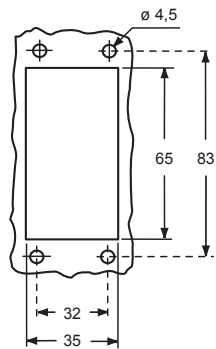


hoods and cover

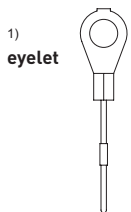


description	part No.	entry Pg	part No	entry M	part No.	entry Pg	part No.	entry M
bulkhead mounting housing with levers and gasket	CHIS 10	--						
surface mounting housing, with levers, high construction	CAPS 10.21	21	MAPS 10.32	32				
cover with 4 pegs (for enclosures with 2 levers) ¹⁾	CHCS 10							
enclosure with pegs, side entry, high construction					CAOS 10.21	21	MAOS 10.32	32
enclosure with pegs, top entry, high construction					CAVS 10.21	21	MAVS 10.32	32
cover with 2 levers (for enclosures with 4 pegs) ²⁾					CHCS 10 G			

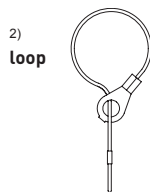
panel cut-out for bulkhead mounting housings



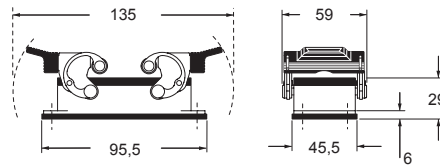
For fixing on housings



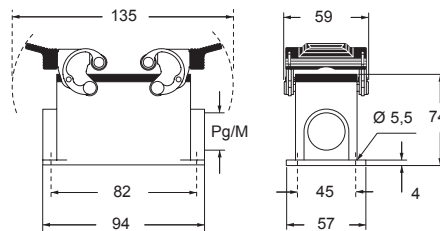
For fixing on hoods



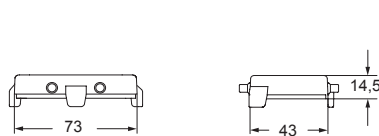
CHIS



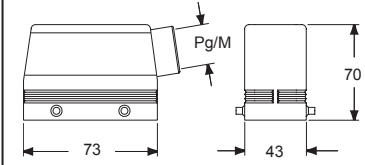
CAPS and MAPS



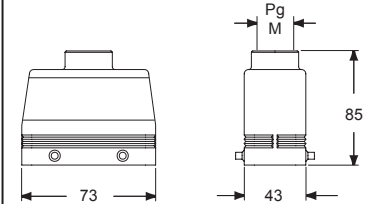
CHCS



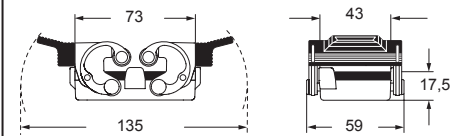
CAOS and MAOS



CAVS and MAVS



CHCS G



CRAUS® Type 4/4X/12

insulating cable gland or fittings without gasket

cable gland with O-Ring gasket