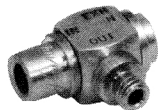


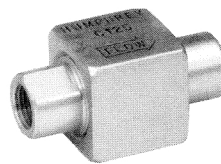
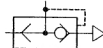
**C1 Check Valve**

Model C1 Check Valve has #10-32 male and female ports. Furnished with gasket for male thread. Weight: 3 oz. (85.1 gms.)



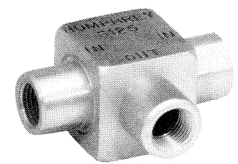
**SQE Shuttle and Quick Exhaust Valve**

Model SQE Shuttle and Quick exhaust valve has #10-32 male and female ports and always exhausts at EXH/IN port when used as a shuttle. Furnished with gasket for male thread. Weight: 4 oz. (113.5 gms.)



**C125 Check Valve**

Model C125 Check Valve has a spring loaded shuttle and 1/8-inch NPT ports. Weight: 1.1 oz. (31.2 gms.)

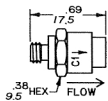


**S125 Shuttle Valve**

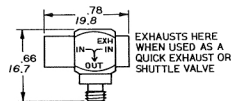
Model S125 Shuttle Valve has a free-floating shuttle to provide fast response, even at low pressure. Ports are 1/8-inch NPT. Weight: 1.2 oz. (34.0 gms.)



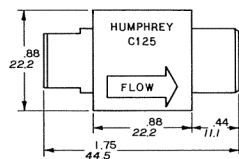
C1



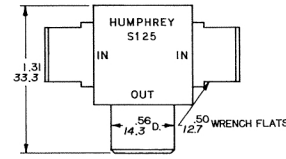
SQE



C125



S125



**Specifications**

**MEDIA:**  
Compressed Air (Consult factory for others)  
**TEMPERATURE RANGE:**  
20 to 150°F (-7.0 to 65.6°C)  
**PRESSURE RANGE:**  
S125, C125: .5 to 125 psig (.03 to 8.6 bars)\*  
SQE, C1: 3 to 125 psig (.20 to 8.6 bars)\*  
\*Bubble tight seal: S125—20 psig (1.4 bars) C125—10 psig (.7 bars) SQE, C1—15 psig (1.0 bars)

**MATERIALS:**  
S125, C125: Aluminum, Nylon, Buna N  
SQE, C1: Brass, Buna N  
LUBRICATION . . . . . Not required

**Air Flow to Atmosphere**

MODEL	30 PSIG CFM	(2.1 BARS) LPM	50 PSIG CFM	(3.5 BARS) LPM	80 PSIG CFM	(5.5 BARS) LPM
C1	3.2	91.0	4.7	133.0	7.0	198.0
SQE	2.7	76.0	4.0	113.0	5.9	167.0
C125	7.0	198.0	10.0	283.0	16.0	453.0
S125	6.0	170.0	9.0	255.0	13.0	368.0

**Air Flow to Atmosphere**

MODEL	100 PSIG CFM	(7.0 BARS) LPM
C1	8.2	232.0
SQE	7.0	198.0
C125	19.0	538.0
S125	16.0	453.0

**Weight**

MODEL	ACTUAL OUNCES	GRAMS
C1	.3	8.5
SQE	.4	11.3
C125	1.1	31.2
S125	1.2	34.0