

Humphrey 250 Series Electric Air Valves

Humphrey 250 Series electric air valves are of double diaphragm poppet design. Because these "no-stick" valves require no lubrication, they are ideal for use with instrument air and other media which prohibit lubrication. The use of lubrication, however, will not prevent a 250 Series valve from functioning if the lubricant is varied or removed.

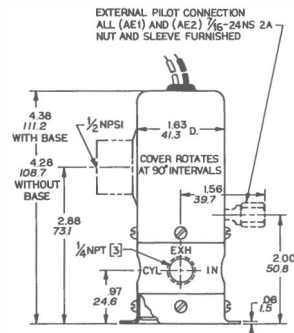
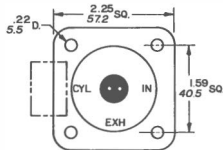
250 Series electric air valves have no sliding seals subject to cuts or metal seals subject to scratches, so they are ideal for use with contaminated media and are unaffected by compressor varnish.

250 Series electric air valves are 2-position, 2-way, 3-way or 4-way, single- or double-solenoid valves. They are designed for rugged duty and rapid cycling and can be mounted in any position.



250E1 250E1-3-10-21-36
Model 250E1 is a single-solenoid, maintained-contact, spring return, 2-way or 3-way valve available either normally closed or normally open.

Model 250AE1 is identical to the 250E1 but has an external air pilot connection for valving media below 30 psig. Pilot air is isolated from valved media such as water, oil, instrument air, and gases.



250E2 250AE2-3-21
Model 250E2 is a double-solenoid, momentary-contact, maintained-position, 2-way or 3-way valve. It holds in either the closed or open position with internal air pressure.

Model 250AE2 (shown) is identical to the 250E2 but has an external air pilot connection for valving media below 30 psig. Pilot air is isolated from valved media such as water, oil, instrument air, and gases.

If AC coils are to be energized longer than 30 seconds, specify Code CD (Continuous Duty). All coils for DC voltages are Code CD.



250-4E1
Model 250-4E1 is a single-solenoid, spring return, 4-way valve. It can be mounted with mounting base (Code 21), with four #10-32 holes

in bottom, or with the two slotted lugs on body. The 250-4E1 is also available as a 3-position, NC/NC or NO/NO valve. Furnished with conduit cover.

